



to enhance the wellbeing of the
lesbian, gay, bisexual and transgender

and all people in our
neighborhoods and beyond

MUNITY

2013 ANNUAL REPORT

TABLE OF CONTENTS

BOARD OF DIRECTORS	7
BOARD OF VISITORS	8
FENWAY HEALTH	10
SIDNEY BORUM JR. HEALTH CENTER	14
THE FENWAY INSTITUTE	16
THE MEN'S EVENT	22
THE WOMEN'S DINNER PARTY	24
LEADERSHIP CIRCLE	26
YOUNG LEADERS COUNCIL	30
HAVILAND SOCIETY	32
LEGACY SOCIETY	36
FRIENDS OF FENWAY	37
TRIBUTE & MEMORIAL GIFTS	40
SPECIAL FUNDRAISING EVENTS	41
HARBOR TO THE BAY	42
COMPANIES & FOUNDATIONS	44
IN-KIND SUPPORT	46
PUBLIC AGENCIES	48
VOLUNTEERS	50
FINANCIALS	55



PRIMARY CARE



THE YEAR IN REVIEW



STEPHEN L. BOSWELL, MD
PRESIDENT & CEO



DOUGLAS SPENCER
CHAIR, BOARD OF DIRECTORS

The last year has been an exciting one here at Fenway Health. 1,100 more people turned to us for their care, bringing us to 21,600 patients who made 110,000 visits. We were able to expand our physical space to help meet this need, building out the previously vacant fourth and fifth floors and expanding the sixth floor of our Ansin Building location at 1340 Boylston Street. The expansion allowed us to add radiology services, including medical x-rays, mammograms, and bone density scans. We also moved our Sidney Borum, Jr. Health Center into a larger, renovated space not far from their previous location.

That expansion was reflected in the growth of our services and programs. The LGBT Aging Project joined The Fenway Institute in 2013, bolstering our ability to serve and advocate on behalf of our elders. The AIDS Action Committee of Massachusetts, New England's largest AIDS service organization, also became a part of the Fenway family once again. Many of you will remember that AIDS Action got its start as a committee of Fenway's Board of Directors in the early 1980s, so this feels a lot like welcoming old friends back into the fold and will allow both organizations to improve delivery of care and services across the state and beyond.

At the same time, we continued to share our knowledge and skills with the larger world. The 2012 International AIDS Conference in Washington, DC was attended by many Fenway staff who presented posters on their findings, hosted satellite sessions on important issues, released new publications, and brought back fresh ideas for future research and collaborations. Our National LGBT Health Education Center conducted trainings for health care organizations across the United States, bringing expertise and hope to remote locations. We hosted HIV/AIDS experts and advocates from across the northeast at the Office of National AIDS Policy's regional meeting for New England in our Ansin Building conference center. And we issued publications, infographics and public policy comments on issues including pre-exposure prophylaxis, the Affordable Care Act, transgender health and the cervical cancer risk of lesbians and bisexual women.

This annual report covers our fiscal year 2013, July 1, 2012 through June 30, 2013. Fenway Health's accomplishments and growth during that time were nothing short of impressive. We want to thank all of our staff, donors, volunteers, and allies for making that possible and we look forward to continuing to work towards a future where all people have access to the high-quality health care and services they deserve.

BOARD OF DIRECTORS

Fenway Health would like to thank the members of our Board of Directors who have provided us with leadership and guidance.

2012–2013 BOARD OF DIRECTORS

DOUGLAS SPENCER
CHAIR
MICHAEL ISTVANKO
VICE CHAIR
JOHN M. DECICCIO
TREASURER
ROBERT H. HALE, ESQ.
CLERK
ROBIN A. ATLAS, MD
AT-LARGE
JOANNE HERMAN
AT-LARGE

SHERIFF ANDREA CABRAL
JOSEPH CASTELLANA, PHD
DANIEL DIBARTOLOMEO
JOHN FITZGERALD GATES, PHD
CHARLES HINDMARSH
JOHN B. KOSS, ESQ.
ASHLEY LUCAS
LIZ PAGE, CFRE
BRIAN PRICE, MD
JOSE LEOPOLDO ROMERO, JR.
ALLISON SALKE*
JOHN R. STEWART
RICHARD TARANTO
GAIL TSIMPREA, PHD

DORIE CLARK
CO-CHAIR, BOARD OF VISITORS
JOHN R. PITFIELD, ESQ.
CO-CHAIR, BOARD OF VISITORS
STEPHEN L. BOSWELL, MD
PRESIDENT AND CEO

2013–2014 BOARD OF DIRECTORS

DOUGLAS SPENCER
CHAIR
JOHN B. KOSS, ESQ.
VICE CHAIR
JOHN M. DECICCIO
TREASURER
ROBERT H. HALE, ESQ.
CLERK
ROBIN A. ATLAS, MD
AT-LARGE

JOHN BASILE
ANDREA J. CABRAL, ESQ.
JOSEPH CASTELLANA, PHD
DANIEL DIBARTOLOMEO
CHARLES HINDMARSH
ASHLEY LUCAS
RAUL MEDINA
LIZ PAGE, CFRE
LISA L. PAINE, CNM, DRPH
BRIAN PRICE
LOUISE RICE, RN
JOSE LEOPOLDO ROMERO, JR.
JOHN R. STEWART
RICHARD TARANTO
GAIL TSIMPREA, PHD
JOHN P. WOLFARTH

DORIE CLARK
CO-CHAIR, BOARD OF VISITORS
JOHN R. PITFIELD, ESQ.
CO-CHAIR, BOARD OF VISITORS
STEPHEN L. BOSWELL, MD
PRESIDENT AND CEO

* PAST BOARD CHAIR

BOARD OF VISITORS

The Board of Visitors' mission is to heighten Fenway's visibility and provide additional expertise and experience to support the organization and its work. Fenway's Board of Visitors members are interested and influential members of the community, patients, donors and friends. Author and branding expert Dorie Clark and Choate, Hall & Stewart LLP Partner John R. Pitfield, Esq., were the 2013 Co-Chairs of Fenway's Board of Visitors.

BOARD OF VISITORS JULY, 1 2012 - JUNE 30, 2013

REBECCA P. ALLISON	JOSEPH P. COLAGRECO, DNP	PAUL M. FRASCELLA
KEPLIN ALLWATERS	JOYCE L. COLLIER	STACEY A. FURTADO
PAUL D. ANAGNOSTOS	HARRY COLLINGS	MICHAEL GANNON
WILLIAM J. ANDERSON, PHD	STEVEN COMINGDEER	RICHARD D. GARDNER, ESQ.
MIKKI ANSIN	ANDREW G. COMPAINE, MD	ERIC GEORGI
RONALD M. ANSIN	THOMAS W. CONCANNON, PHD	THOMAS A GERACE
GARY ARENA	JEFFREY A. CONRAD	DIANE L. GILWORTH
FELIX ARROYO	JAVIER CORTES	DAVID L. GOLDMAN
JENS AUDENAERT	JOHN M. COSTELLO	ALEX GONZALEZ, MD
JOHN M. AUERBACH	HAROLD D. COX	LILLIAN GONZALEZ, CPA, MST
A. CORNELIUS BAKER	JULIE A. CROCKFORD	RICHARD IAN GORDON
BENJAMIN S. BAUM	LYNN D'ANGONA	A.J. GOULDING
ADRIENNE R. BENTON	DEBORAH A. DACCORD, ESQ.	JUSTIN L. GREEN
MOHAN D. BOODRAM	GARY K. DAFFIN	LORI J. GRIFFITHS
MARY BETH BORRÉ	LINDA DANIELS, PSYD	ANTHONY GRILLO
ROBERT BOTTERIO	DAVID M. DATZ, ESQ.	EDWARD GROMADA
EVA BOYCE	DIANE DAVIDSON	STEVE GROSSMAN
DAVID J. BREEN	ROBERT K. DUBY	PATRICK C. GUERRIERO
DAVID W. BROWN	CHRISTINE M. DUFFY	HOLLY GUNNER
RITA MAE BROWN, PHD	DENNIS P. DUFFY	JULIE HAMILTON
SYLVAIN BRUNI	JEFFREY P. DUGAN	PATRICIA A. HAMILTON
RUTH R. BUDD	DEE DEE EDMONDSON	DEAN T. HARA
JAMES C. BUTTRICK	THOMAS H. EGAN, III	SHAWN M. HARTMAN
EDWARD F. BYRNE, IV	JESSE M. EHRENFELD, MD	DANIEL HELLER
KAY CALVERT	JOHN R. EHRENFELD	HOWARD T. HELLER, MD
JOSEPH R. CAPUTO	KENNETH ELMORE	JAMISON HILL
AMELIA M. CHARAMBA	WILLIAM T. EMERY	AN G. HINDS
WENDELL K. CHESTNUT	PETER J. EPSTEIN, ESQ.	HOWARD HOFFMAN
JENNIFER CHRISLER	KYLE Y. FAGET	REID HOGAN-YARBRO
LULA CHRISTOPHER	MICHAEL FALCONE	JOHN D.H. HOSE
DAVID N. CICILLINE	TIMOTHY J. FAMULARE	JAMES W. HUNT, JR.
MARJORIE CLAPPROOD	SANTA FARERI	JOHNNY W. HURDLE
ANDERSON CLARK, PHD	VALERIE FEIN-ZACHARY, MD	THOMAS HYDE
DORIE CLARK, CO-CHAIR	PAUL J. FLANNERY	RAPHAEL JAIMES-BRANGER
WILLIAM C. CLENDANIEL	PETER Y. FLYNN	PEGGY L. JOHNSON, MD
STEWART B. CLIFFORD, JR.	STEVEN F. FOSSELLA	ROBB W. JOHNSON



JENNIFER L. JONES
 MARIKO M. KAMIO
 TERENCE M. KEANE, PHD
 SCOTT KEARNAN
 JUNE KELLY
 DAVID J. KNIGHT
 ANTHONY G. KOLISH
 PAUL G. KOWAL
 ROBERT E. KRASOW
 HOLLY LADD
 MICHAEL LAKE
 JENNIFER LEANING, MD
 ROSS LEIMBERG
 JAMES LIDDELL
 JAMES A. LOPATA
 MICHAEL LOWENTHAL
 SALLY H. LUNT, EDD, JD
 PAUL E. LYNCH, MD
 DEBORAH MAINE, DRPH
 JOSEPH R. MALARNEY
 SARA L. MALCONIAN
 ELIZABETH A. MALIA
 THOMAS J. MARTORELLI
 DAVID MCBRIDE, MD
 JEFFREY MCCARTHY
 VINCENT P. MCCARTHY, ESQ.
 MARK P. MCGRATH, ESQ.
 BENJAMIN M. MCGUIRE
 M. LISA MCHAM, MD
 MARGARET MCKENNA
 JAIME MESSINA
 RUTH MODRIC
 ANGEL MORAN
 BETTY I. MORNINGSTAR
 THERESA C. MURRAY
 RICHARD A. MUSIOL, JR.

TREVOR M. NARDINI
 LINDSEY L. NOECKER
 KEVIN O'LAUGHLIN
 ALEX J. ONETO
 DALE ORLANDO
 RICHARD D. ORTNER
 LISA L. PAINE, CNM, DRPH
 JOAN PARKER
 BRIAN PICCINI
 JOHN R. PITFIELD, ESQ., CO-CHAIR
 JOHN PRINCE
 MATTHEW D. PROCH-WILSON
 MARK PULEO
 ANGELA RAPPOLI
 JOSEPH T. REALMUTO, JR.
 ABIGAIL D. REBELLO
 JOHN T. REIDY
 AMAAD RIVERA
 V. GENE ROBINSON
 CAROL A. ROBY
 ANN ROGERS
 DIANE M. ROGERS
 CARL S. ROSENDORF
 JEFF ROSS, ESQ.
 JONATHAN S. ROTENBERG
 MAX L. SANDUSKY
 ARNOLD E. SAPENTER
 REGINA SAVAGEAU
 ANDREW F. SAXE
 VIVIAN L. SCHNEIDER, ESQ.
 CARL M. SCIORTINO, JR.
 JAMES R. SELIGMAN, DMD
 DEBORAH SHIELDS, JD, MPH
 SARAH SHOEMAKER
 KURT A. SLYE, MD
 BRANDON O. SMITH

JEROME M. SMITH
 GREGG SNYDER
 LENA SORENSEN, PHD*
 RICHARD SPENCER
 SCOTT E. SQUILLACE, ESQ.
 CALEB PAUL STEWART
 HENDRIK STREECK, MD
 DANIEL SWEENEY
 RIK TAMM-DANIELS
 OMAR THOMAS
 MATTHEW E. THOMPSON
 RICHARD R. TISEI
 KATHERINE TRUSCOTT
 AIMEE VAN WAGENEN
 DONALD VAUGHAN
 JOHN M. VENDETTI
 WESLEY J. WERBECK
 MATTHEW WHITE
 LISA WHITTEMORE
 CLAIRE B. WILLIS
 DAVID L. WILSON
 JOHN F. WINTERLE, DMD
 JARED WORFUL
 ELIZABETH WU
 KEVIN P. WULFF
 RODNEY L. YODER
 JOBLIN C. YOUNGER, ESQ.
 EDDIE ZAIDNER, MD
 RICHARD ZAIDNER, MD
 WILLIAM P. ZANETIS
 YIJIE ZHANG, PHD
 JOSEPH D. ZIBRAK, MD
 DAVID ZIMMERMAN
 STEPHEN H. ZINNER, MD

* DECEASED

FENWAY HEALTH

Fenway has helped pioneer a philosophy of integrated care that looks at each patient as a whole person and our staff works as a team to meet the needs of everyone who comes through our doors.

Fenway Health offers medical, behavioral health, dental and eye care, a pharmacy, HIV/STI screening, alternative insemination services, a violence recovery program, women's health and transgender health care and services. Fenway Health cares for our community from four Boston locations.



THE ANSIN BUILDING

A 10-story, 100,000 square foot health care and research facility. It is the largest building ever constructed by an organization with a specific mission to serve the LGBT community.



FENWAY: SIXTEEN

Housed in Fenway's historic 16 Haviland space, offers programs and services geared towards enhancing the health and well-being of gay and bisexual men and transgender people.



FENWAY: SOUTH END

A private practice setting for medical and behavioral health care, women's health, and pharmacy services conveniently located for those who live and work in Boston's South End and Back Bay neighborhoods.



THE SIDNEY BORUM, JR. HEALTH CENTER

Quality health care for young people ages 12 to 29—many of whom are LGBT, HIV-positive, living on the streets, using drugs or alcohol, engaging in sex work or gang involved—who may not feel comfortable going anywhere else.





THE MISSION OF FENWAY
HEALTH IS TO ENHANCE
THE WELLBEING OF THE
LESBIAN, GAY, BISEXUAL &
TRANSGENDER COMMUNITY
AND ALL PEOPLE IN OUR
NEIGHBORHOODS AND
BEYOND THROUGH ACCESS
TO THE HIGHEST QUALITY
HEALTH CARE, EDUCATION,
RESEARCH AND ADVOCACY.

FENWAY 800 HEALTH

1340 BOYLSTON STREET

Both Israel Deaconess
Official Hospital
the Boston Red Sox

IN 2013, FENWAY HEALTH

PROVIDERS SAW 21,600

PATIENTS WHO MADE

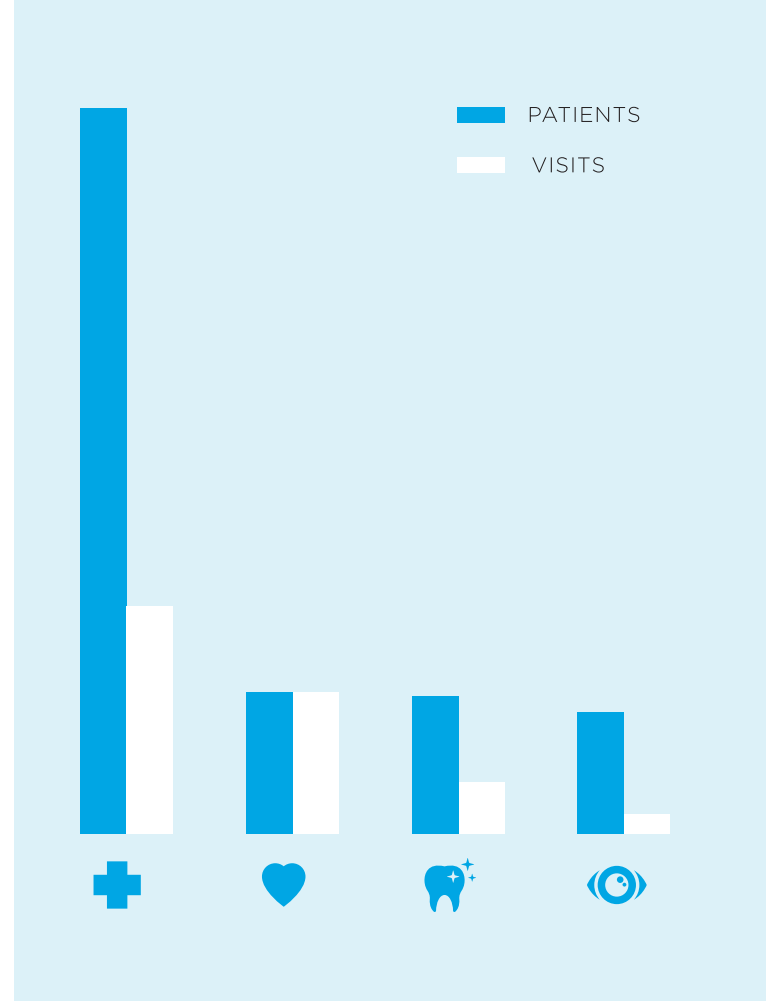
110,000 PATIENT VISITS.

MEDICAL | 18,500 PATIENTS | 58,000 VISITS

BEHAVIORAL HEALTH | 3,600 PATIENTS | 36,400 VISITS

DENTAL | 3,500 PATIENTS | 13,400 VISITS

EYE CARE | 3,100 PATIENTS | 4,900 VISITS



EXPANSION

In late 2012, we finished building out the fourth and fifth floors of our 1340 Boylston Street location and expanded the dental area on the sixth floor, providing much needed space enabling us to offer additional services. The fourth floor is a new primary care floor and includes on-site digital imaging services, bone density screening and mammograms. The fifth floor is dedicated to the rapidly expanding work of The Fenway Institute, which now occupies two full floors of the building. And we've doubled the size of the dental department on the sixth floor, which should help reduce waiting times for dental appointments and allow us to serve more clients in need of this critical service.

AIDS ACTION COMMITTEE

In 2013, the AIDS Action Committee of Massachusetts, New England's largest AIDS service organization, became a part of the Fenway family once again. This new arrangement will allow the two organizations to work more closely together, improving delivery of care and services to people living with HIV/AIDS, and helping strengthen advocacy, prevention and research efforts.

TRANSGENDER HEALTH PROGRAM

1,100 transgender patients currently receive care at Fenway Health locations, an increase of over 900 patients since 2007. The Transgender Health Program continues to expand to comprehensively address the needs of Fenway's rapidly growing transgender patient base.

INSURANCE ENROLLMENT PROGRAM

700 people were approved for coverage under MassHealth, Commonwealth Care and Health Safety Net with help from Fenway's health insurance enrollment program.

NAVIGATION PROGRAM

Fenway's Navigation Program uses Peer Health Navigators to reach those at highest risk for health disparities and connect them to life-saving services. Navigation clients include gay and bisexual men, transgender individuals, those affected by crystal methamphetamine use, and other individuals at high-risk for health disparities. Fenway's Peer Health Navigators hold more than 2,500 individual and group client meetings annually.

FENWAY HEALTH NAVIGATORS

6,000 calls per year are answered by Fenway Health Navigators, who provide callers with critical information, referrals and access to services.

FENWAY PHARMACY

Nearly \$400,000 in free and discounted medication was given out by the Fenway Pharmacy's two branches to help meet the needs of all Fenway patients. The pharmacies also offer free delivery services for homebound patients and others who need it. Together, they fill an average of 500–550 prescriptions per day.

RADIOLOGY DEPARTMENT

Fenway added a Radiology Department in 2013, allowing us to offer onsite mammograms, x-rays and bone density scans. These services save time and improve care for all of our patients, but are especially important for our growing transgender patient population, offering these procedures in medical environments that are culturally competent in caring for LGBT people.

ALTERNATIVE INSEMINATION

Almost 480 babies have been conceived with the help of the Alternative Insemination (AI) Program since it began 30 years ago. Catering to LGBT people and unmarried women who want to be parents, it was believed to be the first of its kind in the United States. In addition to insemination, the AI Program offers social and emotional support in the form of workshops and groups for LGBT parents and prospective parents.

VIOLENCE RECOVERY PROGRAM

Nearly 400 victims of bias crimes, domestic violence, sexual assault and police misconduct each year are helped by the Violence Recovery Program (VRP). The VRP offers individual and group counseling. They also speak about LGBT trauma recovery on a national level at conferences and roundtables and provide technical assistance and training to the Boston Police Department, District Attorney's offices, hospitals, health centers, social service agencies and community and school groups.

LGBT HELPLINES

Fenway's LGBT Helpline and Peer Listening Line for LGBT Youth answered more than 3,600 calls, providing resources and a friendly ear to people across North America. The helplines piloted an online chat feature in 2013, and were able to offer support and assistance to more than 100 LGBT people from around the world.

SUBSTANCE ABUSE TREATMENT

In 2013, 250 new patients were seen by Fenway's Substance Abuse Treatment Program for problems with substances including alcohol, crystal methamphetamine and cocaine. No one is ever turned away for lack of ability to pay and many patients are referred into other services at Fenway.

Fenway Health saw the first HIV/AIDS cases in New England in the early days of the epidemic and was awarded the first HIV counseling and testing contract by the Massachusetts Department of Public Health in 1985. Fenway remains one of the largest confidential HIV counseling and testing sites in the state and is the largest provider of outpatient HIV/AIDS care in New England:

NEARLY

1,800

HIV-positive patients received care at Fenway locations in 2013

OVER

8,500

HIV antibody tests per year are administered by Fenway providers and HIV Counseling, Testing & Support Services staff

100%

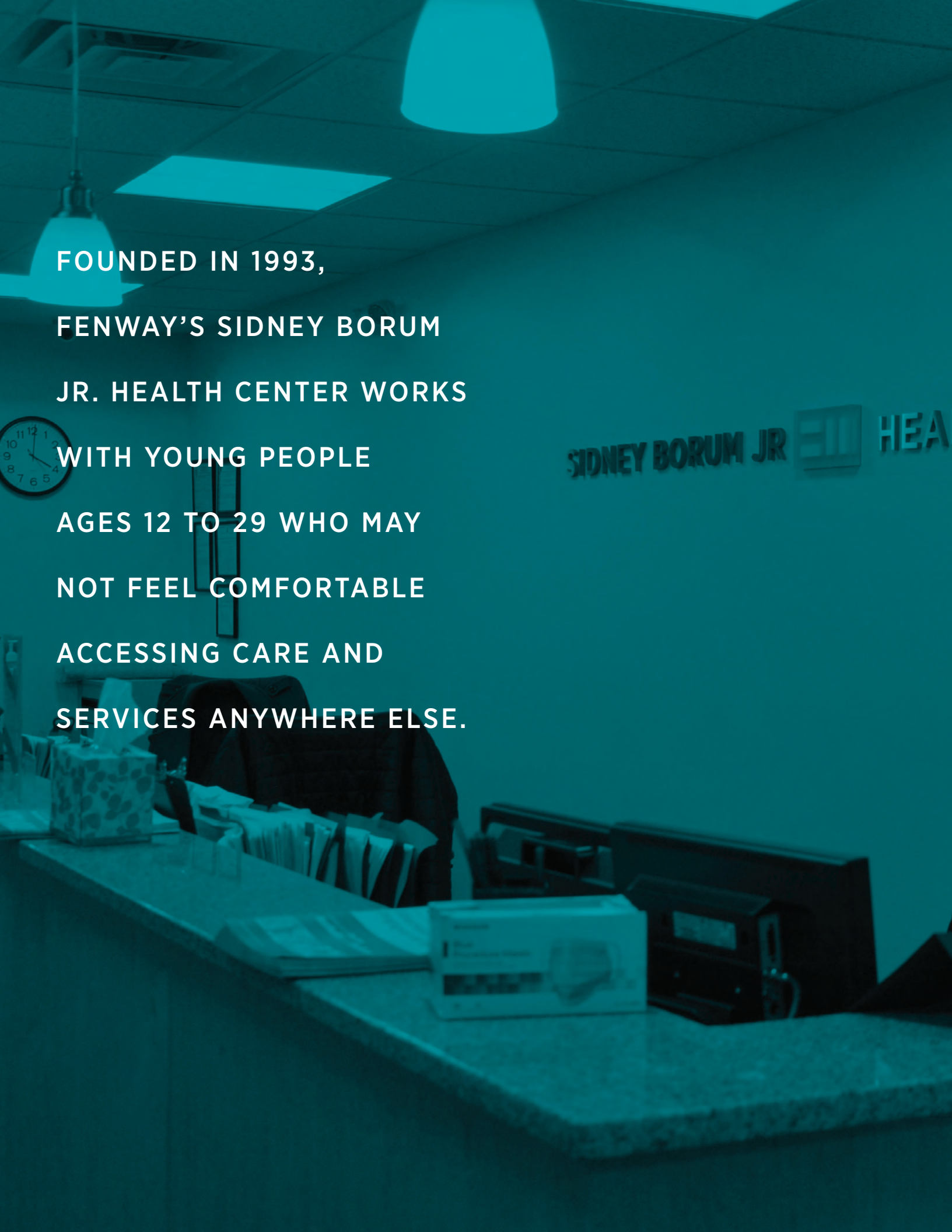
of those who test positive for HIV are triaged into care and services at Fenway Health

NEARLY

85%

of those seeking HIV tests identify as men who have sex with men and the remainder describe their HIV risks as heterosexual sex, injection drug use or occupational exposure

Fenway Health is affiliated with Beth Israel Deaconess Medical Center. All physicians hold faculty appointments at Harvard Medical School. Research affiliations include Massachusetts General Hospital, Brigham and Women's Hospital, and Brown University Medical School.



FOUNDED IN 1993,
FENWAY'S SIDNEY BORUM
JR. HEALTH CENTER WORKS
WITH YOUNG PEOPLE
AGES 12 TO 29 WHO MAY
NOT FEEL COMFORTABLE
ACCESSING CARE AND
SERVICES ANYWHERE ELSE.

SIDNEY BORUM JR. HEALTH CENTER

ALTH CENTER

SIDNEY BORUM, JR. HEALTH CENTER

Many of the teens and young adults who turn to the Borum for help are LGBT or questioning, living with HIV/AIDS, homeless, gang involved or struggling with substance use issues. The Borum offers medical and behavioral health care in a safe and welcoming environment.

Founded in 1993, Fenway's Sidney Borum, Jr. Health Center works with young people ages 12 to 29 who may not feel comfortable accessing care and services anywhere else. Many of the teens and young adults who turn to the Borum for help are LGBT or questioning, living with HIV/AIDS, homeless, gang involved or struggling with substance use issues. The Borum offers medical and behavioral health care in a safe and welcoming environment.

The Borum joined Fenway Health in 2010 and is named in memory of Sidney W. Borum, Jr., who died of AIDS in 1992. Borum was an African-American HIV/AIDS activist and educator who worked with adolescents and other young people at risk for HIV transmission.

Providers at the Borum cared for almost 1,600 young people who made 6,800 patient visits in 2013. At the end of June, 2013, Borum staff moved into renovated space at 75 Kneeland Street. Located between Tufts Medical on the Orange Line and South Station on the Red, the Borum's new home is also a short walk from the Chinatown T stop. The new space will allow the Borum to serve even more vulnerable and at-risk young people.

THE FENWAY INSTITUTE

The Fenway Institute at Fenway Health is an interdisciplinary center for research, training, education, and policy development, focusing on national and international health issues.

At The Fenway Institute, we conduct innovative research and develop education and advocacy programs grounded in the LGBT community. We act as a catalyst for change in the larger community by applying our knowledge broadly. We are motivated by the belief that everyone, everywhere deserves access to high-quality, culturally-competent health care. Research affiliations include Massachusetts General Hospital, Brigham and Women's Hospital, Harvard Medical School, and Brown University Medical School.


The Fenway Institute is the home of the National LGBT Health Education Center and the Center for Population Research in LGBT Health. The National LGBT Health Education Center provides educational programs, resources, and consultation to health care organizations with the goal of optimizing quality, cost-effective health care for lesbian, gay, bisexual, and transgender people.

The Center for Population Research in LGBT Health develops and supports collaborative research and education programs to understand and improve the health of sexual and gender minorities.

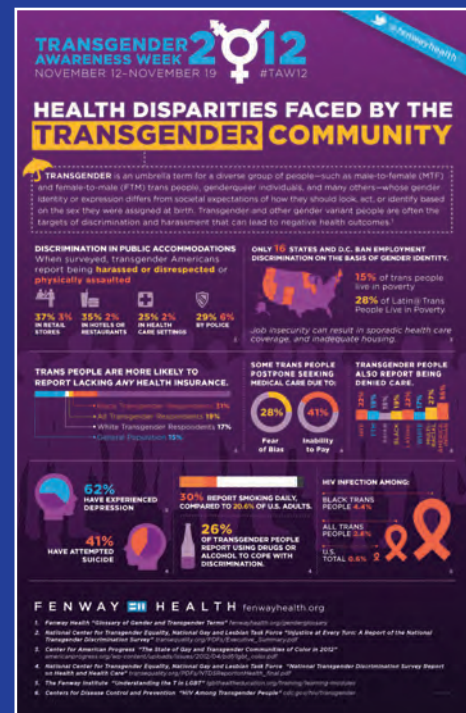
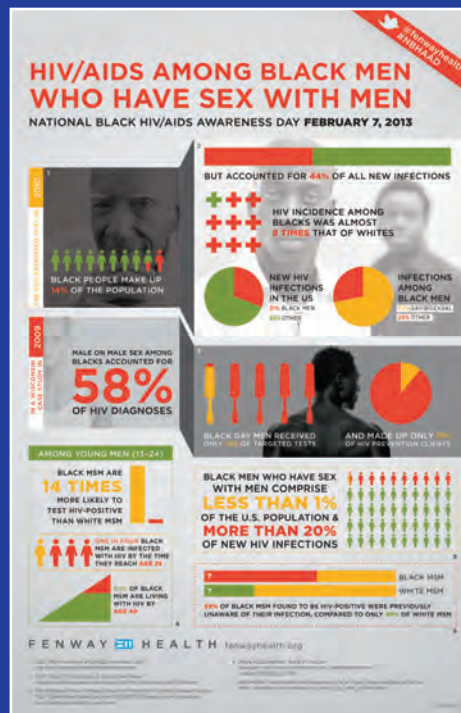
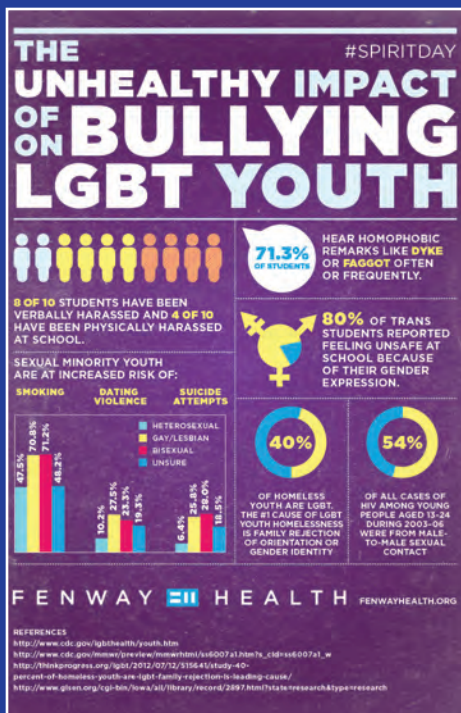
In 2013, the LGBT Aging Project became a program of The Fenway Institute. The LGBT Aging Project is dedicated to ensuring that lesbian, gay, bisexual and transgender older adults have equal access to the life-prolonging benefits, protections, services and institutions that their heterosexual neighbors take for granted so that they can age with the dignity and respect they deserve.

The Fenway Institute doubled the size of its physical space at its 1340 Boylston Street home in late 2012 with the successful build-out of the building's fifth floor. This increased space will allow Fenway to continue to expand its research, education and advocacy work on behalf of the LGBT community.





THE MISSION OF THE FENWAY
INSTITUTE IS TO ENSURE ACCESS TO
QUALITY, CULTURALLY COMPETENT
MEDICAL AND MENTAL HEALTH CARE
FOR TRADITIONALLY UNDERSERVED
COMMUNITIES, INCLUDING LESBIAN,
GAY, BISEXUAL AND TRANSGENDER
(LGBT) PEOPLE AND THOSE
AFFECTED BY HIV/AIDS.

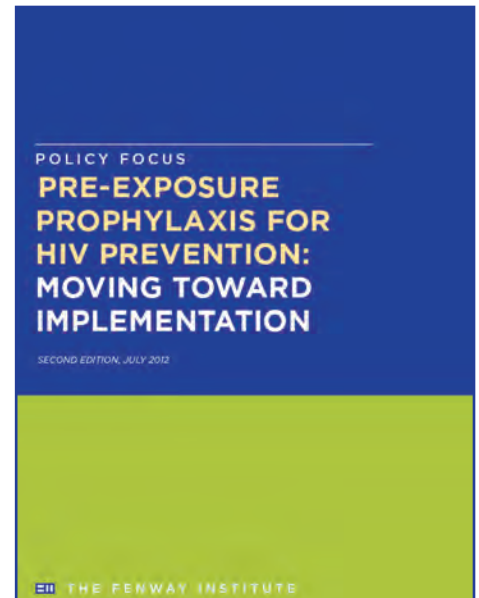
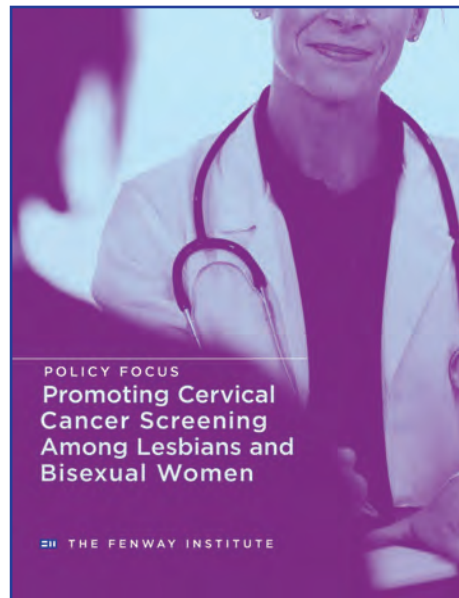
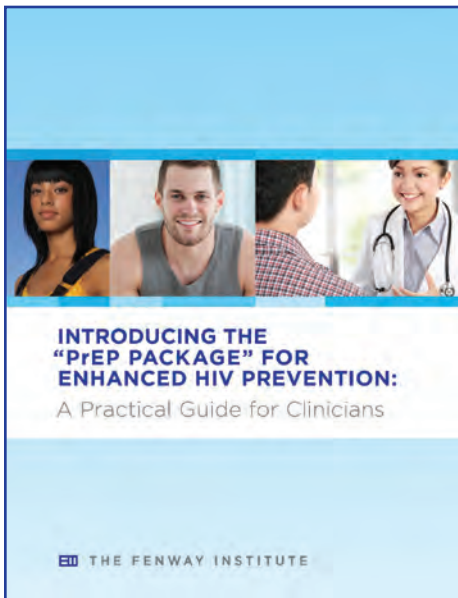


INFOGRAPHICS

We created a number of infographics highlighting LGBT health and HIV/AIDS issues in 2013. Infographics are graphic visual representations of information, data or knowledge intended to present complex information quickly and clearly and are ideal for sharing on blogs and through social media, like Facebook, Twitter, and Tumblr.

2013 infographics included:

- The Unhealthy Impact of Bullying on LGBT Youth
(Spirit Day, October 2012)
- Health Disparities Faced by the Transgender Community
(Transgender Awareness Week, October 2012)
- Stand Up for Trans* Youth
(Transgender Awareness Week, October 2012)
- Fighting HIV/AIDS in the LGBT Community
(World AIDS Day, December 2012)
- HIV/AIDS & Youth Infographic
(World AIDS Day, December 2012)
- National Black HIV/AIDS Awareness Day
(February 2013)



PUBLICATIONS

Faculty and staff from The Fenway Institute issued a number of important LGBT health publications in 2012 – 2013, including:

- Taking Routine Histories of Sexual Health: A System-Wide Approach for Health Centers
- Affirmative Care for Transgender and Gender Non-Conforming People: Best Practices for Front-line Health Care Staff
- Promoting Cervical Cancer Screening Among Lesbians and Bisexual Women
- Addressing the Needs of LGBT People in Community Health Centers: What the Governing Board Needs to Know
- Improving the Health Care of Lesbian, Gay, Bisexual and Transgender (LGBT) People: Understanding and Eliminating Health Disparities
- Introducing the “PrEP Package” for Enhanced HIV Prevention: A Practical Guide for Clinicians
- Pre-exposure Prophylaxis for HIV Prevention: Moving Toward Implementation (2nd edition)

PUBLIC COMMENTS

Fenway submitted public comment on a number of important issues designed to improve the health and well-being of LGBT people in the United States this past year:

- Comments on HHS draft strategic plan FY2014-18, Submitted October 15, 2013
- Comments to HHS regarding rulemaking related to the nondiscrimination requirements in Section 1557 of the Affordable Care Act, submitted September 30, 2013
- Comments on sexual orientation questions proposed for National Survey on Drug Use and Health, April 30, 2013
- Comments on Centers for Medicare and Medicaid Services Affordable Exchanges Guidance issued March 1, 2013; submitted March 15, 2013
- Community public comments, led by The Fenway Institute and the Center for American Progress, on Stage 3 proposed Meaningful Use Guidelines submitted to Office of the National Coordinator of Health Information Technology and Center for Medicare and Medicaid Services; submitted January 14, 2013
- Fenway Health comments on Stage 3 proposed Meaningful Use Guidelines submitted to Office of the National Coordinator of Health Information Technology and Center for Medicare and Medicaid Services, December 19, 2012

THE 2012 INTERNATIONAL AIDS CONFERENCE

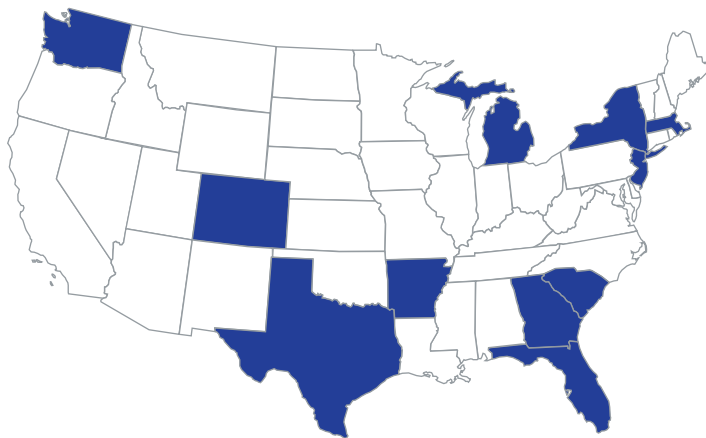
Staff and Faculty from The Fenway Institute and Fenway Health attended the August 2012 International AIDS Conference (IAS2012) in Washington, DC, presenting research findings, participating in panels and discussing recent HIV/AIDS news, advancements and challenges with colleagues from around the world. The International AIDS Conference is the premier gathering for those working in the field of HIV, as well as policy makers, persons living with HIV and other individuals committed to ending the pandemic. It is a chance to assess where we are, evaluate recent scientific developments and lessons learned, and collectively chart a course forward. Fenway experts were quoted in coverage of the conference appearing in The Washington Post, USA Today, The Boston Globe, The Huffington Post, The Advocate and many other news outlets across the country and around the world.

Results from the HPTN 061 study that Fenway participated in were released at the conference, showing alarming rates of HIV infection in Black men who have sex with men (MSM) in the United States. Overall rate of new HIV infection among Black MSM in this study was 2.8% per year, a rate that is nearly 50% higher than in white MSM in the U.S. Even more alarming, HPTN 061 found that young Black MSM—those 30 years of age and younger—acquired HIV infection at a rate of 5.9% per year, three times the rate among U.S. white MSM. The overall infection rate among Black MSM in this U.S. study is comparable to the rate seen in the general populations of countries in sub-Saharan Africa hardest hit by the HIV epidemic.

Fenway sponsored two satellite sessions at IAS 2012, Pre-exposure prophylaxis (PrEP) for HIV Prevention: Maximizing Success and Health Sector Partnerships: Creating Local Clinical Service Networks for MSM in Diverse Global Settings. The Fenway Institute also released two new publications, Pre-Exposure Prophylaxis for HIV Prevention: Moving Toward Implementation (2nd edition) and Improving the Healthcare of Lesbian, Gay, Bisexual and Transgender People. 24 abstracts from Fenway staff and faculty members were featured at the conference.

EDUCATION & TRAINING

The National LGBT Health Education Center conducted a number of trainings for health care providers and staff designed to improve care and services for LGBT patients. Faculty from the Education Center presented at 49 conferences, trainings, and webinars,



In 2013, the National LGBT Health Education Center conducted 49, conferences, trainings and webinars in 11 states, as well as the District of Columbia, and Puerto Rico.

educating 2,551 participants on topics ranging from hormone administration for transgender patients to collecting LGBT data in clinical care settings to HIV prevention and primary care for older adults. Trainings and events were held in 11 states, the District of Columbia and Puerto Rico.

FUNDING

In early 2013, the National Institutes of Health (NIH) awarded The Fenway Institute a three-year grant to address health disparities in LGBTQ (lesbian, gay, bisexual, transgender, and queer/questioning) youth of color, through the National Institute on Minority Health and Health Disparities (NIMHD). This funding allowed us to establish a community-based research initiative to create and pilot interventions to address those disparities. BAGLY (Boston Alliance of Gay, Lesbian, Bisexual and Transgender Youth), JRI Health, Fenway's Sidney Borum Jr. Health Center, and the Massachusetts Commission on Lesbian, Gay, Bisexual and Transgender Youth are partners on the grant.

TRAINING IN NIGERIA

In May, staff from Fenway Health and The Fenway Institute traveled to Nigeria to conduct training for health care providers living and working in regional health centers there. The goal of this training, titled Health Sector Intervention Training: Nigeria, was to improve the ability of care providers to respond to the specific needs of men who have sex with men (MSM) as they support a study being conducted throughout

Nigeria called the TRUST Study. TRUST looks at HIV and STD prevalence, incidence and risk behaviors among Nigerian MSM and the impact of providing HIV medical and prevention services at a Trusted Community Center. This study and training were supported by national and international collaborators including the University of Maryland Institute of Human Virology, Johns Hopkins University Bloomberg School of Public Health as well as US National Institutes of Health, US Military HIV Research Program, CDC PEPFAR Nigeria and Population Council Nigeria.

ONAP REGIONAL MEETING

Also in May, The Fenway Institute hosted the White House's Office of National AIDS Policy (ONAP) regional meeting for New England in our 1340 Boylston Street auditorium. This was one of a series of meetings on the implementation of the National HIV/AIDS Strategy (NHAS). The purpose of these meetings is to better understand local and state level efforts as it relates to the implementation of the NHAS, including the Affordable Care Act (ACA). The goal of these meetings is to engage key stakeholders about ongoing challenges and successes of NHAS/ACA implementation. Updates on Federal NHAS implementation efforts were delivered by Grant Colfax, MD, Director of the Office of National AIDS Policy, and Christie L. Hager, JD, MPH, Regional Director, Region 1, US Department of Health and Human Services.

'I AM' SCREENING

In honor of Transgender Awareness Week 2012, the LifeSkills project of The Fenway Institute and the Boundless and Living Well series at Fenway Health debuted a series of "I AM: Trans People Speak" videos featuring Fenway staff and supporters. The "I AM" project raises awareness about the diversity that exists within transgender communities. It gives a voice to transgender individuals, as well as their families, friends, and allies. In addition to the video screening, the event featured a conversation with the filmmaker, video participants and Fenway staff as well as a community toast.



TALK PEP CAMPAIGN

The Fenway Institute launched TalkPEP.org. After possible exposure to HIV, taking medication used to treat HIV may help reduce your chances of becoming HIV-positive, a process called Post-Exposure Prophylaxis (PEP). Like Pre-Exposure Prophylaxis (PrEP), PEP could be an important tool to help stop the spread of HIV from things like unprotected sex, condom slips and breaks, shared needles, and sexual assault. The Talk PEP campaign aims to raise awareness of PEP and encourage people to "talk PEP" with their social networks, partners, and providers. The website educates visitors with a short animated introduction to PEP, resource list, and educational PEP materials that are free to download and distribute.



Marriage equality advocate Marc Solomon received the Congressman Gerry E. Studds Visibility Award at Fenway Health's Men's Event on Saturday, March 9 at the Boston Marriott Copley Place. From left to right: Dr. Stephen L. Boswell, Fenway Health President & CEO; Men's Event Co-Chair Matthew White; Men's Event Co-Chair Brandon O. Smith; Fenway Health Board Chair Douglas Spencer; Dean Hara, Congressman Studds' widower; Marc Solomon; Men's Event Co-Chair John Winterle, DMD; Massachusetts State Treasurer Steve Grossman; and his wife, Barbara Grossman. (Photo credit: Marilyn Humphries)

THE MEN'S EVENT

2013

MEN'S EVENT COMMITTEE 2013

KEPLIN ALLWATERS
JOSEPH CASTELLANA, PHD
ROBERT A. CHABOT
JOHN M. COSTELLO
JEFFREY P. DUGAN
JOHN FLAGG
JAMES R. HARDSOG
JUSTIN T. ISAAC
SCOTT KEARNAN
YOVANNYS KENNEY
ROBERT E. KRASOW
SIGMOND LEWIS
PETER LUCAS
MAURICE J. MAXIE

JEFFREY B. MCCARTHY
RICHARD A. MUSIOL, JR.
MADELYNE OGREN
JOHN PRINCE
BRIAN RAMOS
JAMES R. SELIGMAN, DMD
BRANDON O. SMITH*
RICHARD TARANTO
MATTHEW E. THOMPSON
RICHARD VILLANI
MATTHEW WHITE*
JOHN F. WINTERLE, DMD*
JOSEPH D. ZIBRAK, MD

* MEN'S EVENT 2013 CO-CHAIR



1,300 ATTENDEES



\$550,000 RAISED

The Men's Event is a black-tie fundraiser for Fenway Health and Boston's biggest night on the town for more than 1,300 gay and bi men, transgender people, and allies.

THANK YOU TO EVERYONE WHO HELPED MAKE THE MEN'S EVENT A SUCCESS!

The 2013 Men's Event was held on Saturday, March 9 at the Boston Marriott Copley Place and raised almost \$550,000 in cash, pledges and in-kind support for the life-saving services and programs at Fenway Health.

Fenway Health was honored to present The Congressman Gerry E. Studds Visibility Award to Marc Solomon at the event. Through his work in the fight for the freedom to marry for the LGBT community locally and nationally, Marc has shown a level of commitment to community service that was exemplified by the late Congressman Studds. We are proud to acknowledge how important marriage has been for LGBT citizens of the Commonwealth of Massachusetts. The Congressman Gerry E. Studds Visibility Award is given at The Men's Event to honor individuals of integrity and selflessness who embody the spirit of service and provide positive leadership for the LGBT community. Congressman Studds represented southeastern Massachusetts in the U.S. Congress from 1973 to 1997 and became the first openly gay Member of Congress in 1983 when he proudly acknowledged his sexual orientation standing on the congressional floor. The Congressman Gerry E. Studds Award is given at each year's Men's Event in honor and memory of Studds, who passed away in October 2006.

THANK YOU to all of our Table Captains and Event Team, our corporate sponsors, Marc Solomon, Booty Vortex, KISS 108's Gay Jim, WCVB TV 5's Randy Price and everyone who attended the 2013 Men's Event for helping to make the event such a huge success. And a special thanks goes out to our Event Chairs Brandon O. Smith, John Winterle, DMD, and Matthew White, whose hard work made the night possible.



Dr. Ursula Matulonis received the Dr. Susan M. Love Award at the April 6 Women's Dinner Party, which raised \$440,000 to support care and services at Fenway Health. Pictured from left to right: Dr. Stephen L. Boswell, Fenway Health President & CEO; Dr. Jennifer Potter, Director of Women's Health at Fenway; Dr. Ursula Matulonis, Love Award recipient; Douglas Spencer, Chair of Fenway's Board of Directors; and Women's Dinner Party Co-Chairs Lori Griffiths, Pat Hamilton, and Jennifer L. Jones. (Photo credit: Meri Bond)

THE WOMEN'S DINNER PARTY 2013

WOMEN'S DINNER PARTY EVENT TEAM 2013

MARGARITA ASCENCIO
KERI AULITA CALIFANO
MARY BELGE
CYNTHIA CAHILL
JEANNE H. GRIEVE
LORI J. GRIFFITHS*
PATRICIA A. HAMILTON*
JENNIFER L. JONES*

MARJORIE LEVIN
SARAH KYLEY MCCORMACK
THERESA C. MURRAY
YOLANDA RAMIREZ
ANN ROGERS
DIANE M. ROGERS
REGINA SAVAGEAU

* WOMEN'S DINNER PARTY 2013 CO-CHAIR



1,000 ATTENDEES



\$440,000 RAISED

The Women's Dinner Party is an elegant attire fundraiser for Fenway Health and Boston's biggest night on the town for more than 1,000 lesbian and bisexual women, transgender people, and allies.

THANK YOU
TO EVERYONE
WHO HELPED US
BREAK A NIGHT
OF FUNDRAISING
CHALLENGE
RECORD AT THE
WOMEN'S DINNER
PARTY!

The 2013 Women's Dinner Party took place on Saturday, April 6 at the Boston Marriott Copley Place. With your help, we raised \$440,000 in cash, pledges and in-kind support for the life-saving services and programs at Fenway Health. The evening's challenge, which raised money to name Fenway Health's new mammography suite, brought in over \$165,000, a record for The Women's Dinner Party!

Fenway Health was honored to present the Dr. Susan M. Love Award to Dr. Ursula Matulonis at the event. Through her long and distinguished career as a physician and a researcher, Dr. Matulonis has proved her commitment to the health and wellbeing of women everywhere. Like Dr. Love, for whom the award is named, Dr. Matulonis is a leader in her field of gynecologic cancer care, treatment and research, caring above all else for the health of the individual. As Fenway Health grows and develops our breast cancer screening program, we are proud to acknowledge the work of those who have paved the way before us in this field of medicine.

Dr. Matulonis is Medical Director and Disease Center Leader of the Medical Gynecologic Oncology Program at Dana-Farber Cancer Institute and Associate Professor of Medicine at Harvard Medical School. Her research focuses on developing new targeted therapies for gynecologic malignancies, with a specific interest in the genetic changes in ovarian cancer and how that can lead to rationale drug selection.

Each year, the Dr. Susan M. Love Award is given to honor and celebrate a woman and/or organization that has made a significant contribution to the field of women's health. The Love Award is given in honor of its founding recipient, Dr. Susan M. Love, a pioneer in the fields of women's health and breast cancer. Love helped found the Revlon/UCLA Breast Center in 1992 and currently heads up the Dr. Susan Love Research Foundation which is dedicated to eradicating breast cancer.

THANK YOU to all of our Table Captains and Event Team, our corporate sponsors, Dr. Ursula Matulonis, Kate Clinton, Booty Vortex and DJ Susan Esthera and the nearly 1,000 lesbians, bisexual women, transgender people, friends, supporters and volunteers who attended the 2013 Women's Dinner Party for helping to make the event such a huge success. And a special thanks goes out to our Event Chairs Lori Griffiths, Pat Hamilton and Jennifer L. Jones, whose hard work made the night possible.

LEADERSHIP CIRCLE

The 2012 – 2013 Fenway Leadership Circle is a group of dedicated individuals who made annual gifts of \$1,340 or more between July 1, 2012 and June 30, 2013.

Members enjoy an array of benefits and special recognition.

To learn more, visit us online at fenwayhealth.org/leadershipcircle.

FOUNDING | \$50,000+

RONALD M. ANSIN

EDWARD PAYSON GEORGE CHARITABLE TRUST

BENEFACTOR | \$25,000 - \$49,999

JOHN M. DECICCIO

A.J. GOULDING & JASON HUANG

DANIEL DIBARTOLOMEO

THE SILVA WATSON MOONWALK FUND

PATRON | \$10,000 - \$24,999

JOSEPH R. CAPUTO

STEPHEN M. HARNEY

JEFFREY A. CONRAD

CHARLIE HINDMARSH

PHILIP FINCH

BETTY I. MORNINGSTAR & JEANETTE KRUGER

PAUL M. FRASCELLA

PAUL WILLER

LORI J. GRIFFITHS & FAMILY

KEVIN P. WULFF

ESMOND V. HARMSWORTH

CHAMPION | \$5,000 - \$9,999

PAUL D. ANAGNOSTOS & BRIAN PRICE, MD

HARVEY J. MAKADON & RAYMOND O. POWRIE

GREGORY D. ANSIN

JEFF B. MEANEY

JAMES C. BUTTRICK

KENDRA E. MOORE

AMELIA M. CHARAMBA & MARALYN WHEELER

DANIEL S. NEWTON & CHRISTOPHER FLYNN

DAVID COTTRELL & MATTHEW WALLACE

SAMUEL & ANDREW PANG

DAVID'S FAITH TEAM

CARL S. ROSENDORF

JEFFREY DURKEE

WILLIAM B. RUBENSTEIN

THOMAS P. EVANS

DOUGLAS SPENCER

TIMOTHY J. FITZGERALD

STEPHEN TRAYNOR

BRIAN K. GERHARDSON

LISA TUNG & SPENCER GLENDON

MICHAEL & CATHERINE HEALY

J. SCOTT WALKER

PAUL HEMPEL

EDDIE ZAIDNER, MD

REVEREND MARK C. JOHNSTON, PHD

STANLEY R. ZANAROTTI

THE LASSOR & FANNY AGOOS CHARITY FUND

SETH L. LEVENSON & JOHN CUNNINGHAM



ADVOCATE | \$2,500 - \$4,999

ANONYMOUS (3)

KENNETH P. ABERT

JAYNE M. ALFANO & ANN L. DELMARSH

JEFFREY P. BEALE

JOSHUA S. BOGER, PHD & AMY SCHAFER BOGER, MD

STEPHEN L. BOSWELL, MD & JOHN A. NEALE

SUZANNE CASE

JOSEPH CASTELLANA, PHD & JAMES R. SELIGMAN, DMD

STEPHEN CIRONA

ANDERSON CLARK, PHD

KRISTINA CLARK

HARRY COLLINGS & DAN MOON

JOHN M. COSTELLO

SEAN CURRAN

LAURA E. DORFMAN & MARTHA L. WENGERT

JAMES J. DOWD, JR.

LISA J. DRAPKIN & DEBORAH J. LEWIS

NANNETTE L. DUMAS & JUDITH B. BRADFORD, PHD

JOHN R. EHRENFELD & RUTH R. BUDD

JACK D. GORMAN

CAMILLA S. GRAHAM, MD

ALAN J. GREENFIELD, MD & PAUL G. KOWAL

RAZMIC S. GREGORIAN, PHD

ANTHONY GRILLO

EDWARD & MADELEINE GROMADA

ROBERT H. HALE

JOSEPH HALEY & ERIC TINGDAHL

AN G. HINDS

PEGGY L. JOHNSON, MD & KONI ROSS

TERRELL JORDAN & JUSTIN SHAFFER

JUNE KELLY

KEITH D. KOHL

JOHN B. KOSS, ESQ.

KEN A. LEVINE

JOSEPH S. LEVINE, PHD & STEVEN A. CADWELL, PHD

JAMES C. LOMBARDI

DAVID MCBRIDE, MD & JEFFREY DAVID KELLER

SHANE MCCANN

MAUREEN MCCARTHY

SARAH KYLEY MCCORMACK

ROBERT C. MULLER

CARL D. NAGY-KOECHLIN & BETH NAGY

MICHAEL NOEL

KEVIN O'LAUGHLIN & GREGG SNYDER

MICHAEL J. PIRE & RODNEY L. YODER

TAL RENCUS, MD

JOSE L. ROMERO, JR. & WILLIAM I. ALLISON

ALEX SANCHEZ & STEPHEN D. BURDICK

MARY C. SAVINI

JOHN R. STEWART & MICHAEL IKOMA

JOSEPH J. TAKAREWSKI & CRAIG SATO

JOHN F. WINTERLE, DMD

JOHN P. WOLFARTH & KEVIN W. POWERS

ELIOT T. WRIGHT & RAPHAEL H. JAIMES-BRANGER

DOUGLAS F. YOUNG, JR.

JOBLIN C. YOUNGER, ESQ.

JOSEPH D. ZIBRAK, MD

PETER F. ZUPCOFSKA & ROBERT E. WILSON





YOUNG LEADERS COUNCIL

The Young Leaders Council is an initiative of Fenway Health to empower emerging LGBT leaders and allies to shape their community's future. Members are individuals in their 20s and 30s who've made an annual gift of \$300 or more between July 1, 2012 and June 30, 2013.

In 2013, members contributed nearly **\$100,000** to support Fenway Health's programs and services. Paving the way for generations to come, YLC members exhibit the best of the young LGBT community. We are incredibly thankful for your support!

IN JUST FOUR
YEARS, THE YLC
HAS GROWN TO BE
ONE OF THE MOST
IMPRESSIVE YOUNG
PHILANTHROPIC
GROUPS IN THE
NATION.

\$1,340+

JENS AUDENAERT
NICHOLAS W. DENNIS
JUAN ESCOBAR
KATE FARB-JOHNSON
STACEY A. FURTADO*
MICHAEL GANNON*
ALEX GONZALEZ, MD*
PETER T. GORMAN
CHARLES GREGOR

MATT GROMADA
ROSS HARPESTAD
IAN W. JOHNSON
JENNIFER L. JONES*
EDWARD KAMMERER
JOHN B. KOSS, ESQ.*
SARAH KYLEY MCCORMACK
MATTHEW MEISEL
PAUL O. MILLER*

SHANE MORGAN
MATTHEW NELSON
JOHN T. REIDY*
ASHLEY SHAFFER
JARED WORFUL*
JOBLIN C. YOUNGER, ESQ.*
EDDIE ZAIDNER, MD

\$300 - \$1,339

ADAM S. ALBANO
TODD ARDITO
BARUSCH
DAVID BAUM
MITCHELL BILCZEWSKI
JEFFREY BLACKWELL
TIMOTHY BLANK
AYANA BLUE
STEVEN BOWE
KYLE D. BOWMAN
GREGORY T. BOWNE & MARK STALOFF
SKYLER BRADER
ERIN BRADLEY
LANCE BRISBOIS & ADAM LEVEILLE
KATE BRONSTAD
ROBERT C. BUCHANAN
MICAH J. BUIS
ANDREW BUNYARD
SEAN J. CAPLICE
ROBERT CAPLIS
AARON CHANDLER
LUCAS CHEN
ANDREW J. COLLERAN, JR.
ROBERT CONIGLIO
CARLOS M. COVARRUBIAS
VICTOR J. DAVIDSON
WILLIAM DAVISON
KEVIN DERRICK*
MEGAN E. DOBSTAFF*
JULIAN A. DORMITZER
LIZ DOUGLASS
GENE DUGGAN AND KATIE RADDATZ
CHRISTIAN DUMAIS
EMILIA DUNHAM
PATRICK DYKES
DAVID W. EPPLEY
TIMOTHY J. FAMULARE
DAN FERRELL & DAVID ROGERS
JARED FIJALKOWSKI

BRYAN J. FINOCCHIO & SALVATORE A. FORTE
KRISTEN FITZGERALD
SALLY FRIAR, DC
JEREMY M. FRIE
ABIGAIL GALLANT
DAVID A. GEORGANTAS
EAMONN G. GILL
ERIKA GIOVANNIELLO
PATRICK HALE
SARA L. HAMMOND
DANIEL HELLER*
HOWARD HOFFMAN*
REID HOGAN-YARBRO
JOHN D. HOSE*
JOHNNY W. HURDLE, III
MAXINE JACKSON
EMMA JEFFRIES
DANIEL KAMYCK
SCOTT KEARNAN*
MICHAEL D. KEARNEY
JASON KEAVENY
TYLER D. KINNEY
KRISTINA KNOWLES
DANIEL LISS & CARL-CHRISTIAN R. SIEBEN
JONATHAN S. LITT, MD*
ALICIA LOCHARD
RICHARD LU
ASHLEY LUCAS*
ZHIYUAN MA
JUAN A. MARTINEZ, JR.
STEPHEN MARTYAK
COURTNEY MATTINGLY
JASON MCCOY
JAIME MESSINA*
ANGEL MORAN*
TYLER C. NELLISSEN
RYAN J. NISTLER
MICHAEL OLIVERI & ADAM BEDDIE
KENNETH OLSEN

AMANDA D. O'NEIL
JULIE O'SHAUGHNESSY
TAICE & CHRIS PERROTTI
TINA M. PITTORE
MICHAEL POLIQUIN
ANDREA K. POTTER & AIMEE VAN WAGENEN
REBECCA PRICE & CARA MCKENNA
CHRISTOPHER PRIMIANO
BRIAN RAMOS
MADDALENA RANIERI
ANGELA RAPPOLI*
ABIGAIL D. REBELLO*
JONATHAN REVEIL
GENA RICCIARDI
DEEJAY ROBINSON, JR.
SAMANTHA B. SCHWARTZ
MARTYNA SKOWRON
BRANDON O. SMITH
JEROME M. SMITH
ALLISON W. SMITH
REBECCA SNIDERMAN*
BRIDGET E. SOUZA
DANIEL J. SWEENEY
STEPHANIE A. SYLVIA
RIK* & DAMARIS TAMM-DANIELS
JOHN B. TAYLOR AND CHRISTOPHER MADSON
BENJAMIN W. TOBIN
GUSTAVO TORREZ
CARLOS A. VARGAS
ANDREW VEGA
KEVIN J. VIGNERON
DAVID VILLANOVA
CHRISTOPHER A. VIVEIROS
CHRISTOPHER WALTRIOUS
KELLY WARD
WESLEY J. WERBECK
MARCIA E. WHITEHEAD

* MEMBER OF THE STEERING COMMITTEE DURING FY13

THESE LISTS REFLECT DONORS, VOLUNTEERS AND SUPPORTERS FROM JULY 1, 2012 - JUNE 30, 2013

HAVILAND SOCIETY

The Haviland Society was founded to recognize and to honor Fenway's most crucial donors, those who consistently give to the Annual Fund year after year.

VISIONARIES | 10+ CONSECUTIVE YEARS OF SUPPORT

ANONYMOUS (4)

JAYNE M. ALFANO & ANN L. DELMARSH

RICHARD L. ALFRED & LYNN GOLDSMITH

PAUL D. ANAGNOSTOS & BRIAN PRICE, MD

MIKKI ANSIN

GREGORY D. ANSIN

RONALD M. ANSIN

JAMES AURELIO

ROBERT P. BABINEAU

RAYMOND L. BARNES

KEVIN S. BERRY

MOHAN D. BOODRAM & ROBERT F. MORRIS

MARY BETH BORRÉ

STEPHEN L. BOSWELL, MD & JOHN A. NEALE

DAVID J. BREEN & MICHAEL R. HARRINGTON

CAROL J. BRESLER & CAROLYN A. BILLINGHURST

JAMES C. BUTTRICK

JOSEPH CASTELLANA, PHD & JAMES R. SELIGMAN, DMD

STEWART B. CLIFFORD, JR.

HARRY COLLINGS & DAN MOON

JEFFREY A. CONRAD

JOHN M. DECICCIO

DANIEL DIBARTOLOMEO

MARCIA DRECTOR

NANNETTE L. DUMAS & JUDITH B. BRADFORD, PHD

JOHN R. EHRENFELD & RUTH R. BUDD

JEFFREY M. EPSTEIN

PETER J. EPSTEIN, ESQ.

PHILIP FINCH

PETER Y. FLYNN

STEVEN F. FOSSELLA & DANIEL S. BOLTON

PHILIP A. GAMBONE

A.J. GOULDING & JASON HUANG

ALAN J. GREENFIELD, MD & PAUL G. KOWAL

LORI J. GRIFFITHS & FAMILY

ROBERT H. HALE

JOSEPH HALEY & ERIC TINGDAHL

DEAN T. HARA

ESMOND V. HARMSWORTH

GLENN HAVICAN

PAUL HEMPEL

CHARLIE HINDMARSH

AN G. HINDS

JANE & BRADLEY HONOROFF

PEGGY L. JOHNSON, MD & KONI ROSS

JAMES C. KADDARAS, JR.

LYNN A. KAPPELMAN, ESQ.

TERENCE M. KEANE, PHD & DOUGLAS H. HUGHES, MD

JOHN G. KELLER

KEITH D. KOHL

ANDREW S. LANTZ

EVA & LORENZO LEWIS

DIANE K. LINCOLN

JAMES C. LOMBARDI

LUCY G. MACK

HARVEY J. MAKADON & RAYMOND O. POWRIE

RICHARD E. MARSHALL, MD

KENNETH MAYER

BETTY I. MORNINGSTAR & JEANETTE KRUGER

ROBERT C. MULLER

RANDY & WILLIAM O'BRIEN

ANN PEARSON

STEPHEN P. PENTEK

JAMES M. PIERCE & RICK CRESSWELL

KEVIN W. POWERS & JOHN P. WOLFARTH

DENNIS R. RAMSIER

ROBERT & WENDY REASENBERG

MICHAEL L. RENEE & ALEXANDER CRUZ

ALIX L. L. RITCHIE & MARTY DAVIS

CARL S. ROSENDORF

JONATHAN S. ROTENBERG

ALLISON SALKE

ALEX SANCHEZ & STEPHEN D. BURDICK

ARNOLD E. SAPENTER & JOSEPH C. REED, PHD

CAROLE SCHLESSINGER

GLENN A. SEBERG

BETTY & ERNEST SINGER

KEVIN O'LAUGHLIN & GREGG SNYDER

DOUGLAS SPENCER

SCOTT E. SQUILLACE, ESQ. & SHAWN M. HARTMAN

CALEB PAUL STEWART

JAMES SUMMERS, JR. & DAVID LAMPARIELLO, OD

VIC TERAWSKYJ

STEPHEN TRAYNOR

HENRY K. VANDERMARK

DON WARREN

DAVID L. WILSON & ROBERT D. COMPTON, DDS

RODNEY L. YODER & MICHAEL J. PIORE

SUSTAINERS | 5-9 CONSECUTIVE YEARS OF SUPPORT

ANONYMOUS (10)

DR. JOHN H. ACRES
 WILLIAM I. ALLISON & JOSE L. ROMERO, JR.
 WILLIAM N. ALPERT
 ALBERT L. ANNUNZIATA, PHD
 ROBIN A. ATLAS, MD & TALIA N. HERMAN, MD
 JENS AUDENAERT
 THOMAS J. BAKER
 ROBERT BALDAUF, DPM
 SHERYL BATTIT & KARYN B. ADAMS
 ALLISON F. BAUER & MARIE A. LONGO
 PETER P. BELOBABA
 ALAN R. BENDER
 JOEL W. BENJAMIN
 STEPHEN J. BOBRINITZ
 JOHN J. CORMIER & JAMES M. BONANNO, MD
 BRUCE & PATRICIA BONI
 PETER J. BRADY & ALAN DAVIS
 RANDY BROOMHALL-DILLARD, PHD
 DAVID W. BROWN & BEN PERKINS
 MICAH J. BUIS
 WILLIAM G. BURTON & BRADFORD W. VOIGT
 PATRICIA BYRNES
 WILLIAM J. CALLAHAN, MD
 JOSEPH R. CAPUTO
 KENNETH J. CARANGELO
 PAUL J. CARCHIDI & ERIC HAFNER
 AMELIA M. CHARAMBA & MARALYN WHEELER
 JOYCE L. COLLIER & JENNY POTTER, MD
 MICHAEL & LOUISE CONNELLY
 DAVID R. CORMIER
 JAMES & JANE COTTRELL
 PETER B. COUGHLIN
 JULIE A. CROCKFORD & SHERIDAN HAINES
 JOHN V. CUNNEY, JR. & JARED WOLLASTON
 STEPHEN P. CUNNINGHAM & DARYL WICKSTROM
 DEBORAH & THOMAS DACCORD
 DAMON-CRONMILLER FAMILY
 WILLIAM P. DEROSA
 CHRISTINE M. DESMOND
 DONALD & ANITA DICKINSON
 LEIF W. ELLISEN, MD, PHD
 NATASHA ENGAN & IRWIN SCHWARTZ
 DR. STEPHEN J. ENGLER & JOHN S. F. LOPES
 MERYL EPSTEIN & PATRICIA NUZZOLA
 THOMAS P. EVANS
 D. STANWOOD EVERETT, JR.
 JULIE K. FAHLMANN
 TERESA L. FAULISI
 TIMOTHY J. FITZGERALD
 MALCOLM J. FLYNN
 NIAMH C. FOLEY
 DEIDRE L. FOX
 JOHN FRISHKOPF & DAVID KING
 STONE SOUP FUND
 ROBERT P. GALLAGHER & WILLIAM J. LYNCH

RICHARD D. GARDNER, ESQ.
 ROBERT L. GEARY
 THOMAS AUGUST GERACE
 BRIAN K. GERHARDSON
 ALEX GONZALEZ, MD
 JACK D. GORMAN
 MICHAEL & ARLENE GREENSTEIN
 EDWARD & MADELEINE GROMADA
 JUDY A. GROVES & TIFFANY PATRICK
 JOHN A. HAAS
 DENNIS M. HALEY
 MARILYN HALISKI
 WILL HALPIN
 PATRICIA A. HAMILTON
 HARRIET & BRIAN HAMILTON
 SARA L. HAMMOND & MOLLIE A. RUBEN
 JOHN D. HANCOCK & JOHN F. WOOD
 CHRISTOPHER D. HARTLEY
 FREDERICK J. HEINRICHS & DAVID HECKERT
 JOANNE HERMAN & TERRY FALLON
 JOHN E. HERSHEY & ANNA S. HERSHEY
 KEN HIRSCHKIND
 ANNE HOLLESEN & PIERRE A. TRESFORT
 MARC HORTON
 DEREK A. HOWE
 MICHAEL ISTVANKO
 JAY J. JAKUBOWSKI, D.V.M. & SHAWN NIGHTINGALE
 DANIEL KAMYCK
 TODD A. KATZMAN & MARC LACASSE
 WILLIAM W. KIMBALL
 THE COLAGRECO-KNIGHT FAMILY
 JOHN B. KOSS, ESQ.
 STANLEY KRAMER
 JOHN W. LANEY & JOAN N. YARBOROUGH
 PETER A. LANS
 LEWIS LASHER
 STUART & SALLY LESSER
 SETH L. LEVENSON & JOHN CUNNINGHAM
 ADAM E. LEVINE
 HARLAN S. LEVINSON
 JEFFREY & DEBRA LIEBERMAN
 DANIEL & DEBORAH LOLIK
 ROGER W. LOVEJOY II
 SALLY H. LUNT, EDD, JD
 ROBERT W. MACK
 SARA MALCONIAN & KATHERINE TRUSCOTT
 RACHEL & SUDHIR MANANDHAR
 PAULA MARELLA, DPM & DEBRA OLSZEWSKI
 REBECCA & CARLA MARSHALL-WAGGETT
 STEVEN M. MARTIN
 CHARLES MAYO & MARY ELLEN MAYO
 KEVIN T. MCCUE
 MICHAEL MCDERMOTT, III & PAUL B. REINERT
 MATTHEW MCTYGUE & TODD A. RIVERS
 ROBBIE J. MEITLER
 MYRON MILLER

BRIAN T. MITCHELL
 ROBERT A. MITCHELL & THOMAS J. MCNICHOL, JR.
 ROBERT F. MONACO
 ROBERT M. MOORADIAN
 JEFFREY MORGAN
 ROBERT Y. MURRAY
 LINDSEY L. NOECKER
 ALEX J. ONETO
 GARY S. ORGEL & MICHAEL BURAK
 THOMAS D. PENQUE
 JUDITH E. PERLMAN
 TAICE & CHRIS PERROTTI
 JHAN E. PHILLIPS
 JOHN R. PITFIELD, ESQ. & PAUL E. LYNCH, MD
 TINA M. PITTORE
 KERSTIN PRITCHARD
 THADDEUS RAUSHI & SYLVIA RAUSHI
 SARI REISNER
 LOUIS RISOLI
 PAUL & CAROL ROSE
 KAREN S. ROTENBERG & MICHAEL ROTENBERG
 ELIZABETH & EDWARD SAEF
 STEVEN A. SAFREN, PHD & WILLIAM F. PIRL, MD
 THOMAS J. SANTANIELLO
 JOHN J. SCHAECK
 WILLIAM S. SHAW, PHD, PE & PAUL SILVA
 KURT A. SLYE, MD
 VIRGINIA L. SPAULDING
 JUDGE GEORGE R. SPRAGUE & LEE T. SPRAGUE
 JOHN R. STEWART & MICHAEL IKOMA
 ELIZABETH STRASSER & LAWRENCE H. RUBIN
 ALAN & CAROLINE STROUT
 MICHAEL J. SULLIVAN
 JOSEPH J. TAKAREWSKI & CRAIG SATO
 RIK & DAMARIS TAMM-DANIELS
 RICHARD TARANTO & JON ELLMS
 FRED A. TAUB & SUSAN C. COHEN
 HOWARD L. THOMPSON
 LISA TUNG & SPENCER GLENDON
 RODNEY VANDERWARKER & TODD PAUL
 JOSEPH C. VENETO
 CHRISTOPHER A. VIVEIROS
 PATRICIA & EDWARD VIVEIROS
 ANTHONY VOLPONI
 CAROLYN WALDEN
 WANDA WALLACE
 GEORGE T. WALMSLEY
 RICHARD A. WILMOT, MD
 JEAN & RICHARD WILSON
 KEVIN P. WULFF
 PAUL J. YAWORSKY
 DOUGLAS F. YOUNG, JR.
 PETER F. ZUPCOFSKA & ROBERT E. WILSON

SUPPORTERS | 3-4 YEARS OF CONSECUTIVE SUPPORT

ANONYMOUS (7)

CORINNE & GERALD ADLER
DAVID A. ADLER, MD & JILL S. ADLER
LAURENCE H. ANDREWS
STEPHEN F. ARCIERO
TAMMY L. ARCURI, ESQ.
TODD ARDITO
JAMES ASP
JOANNE T. AYOUB & ROSEANNE JOAQUIN
STEVEN BACKHAUS
DIANA M. BAILEY, EDD & ANITA S. KUNHARDT
ANNE BARRETT
MICHAEL & JEAN BARRY
BARUSCH AND GREG PRICE
JAMES P. BENNETTE, JR. & DAVID M. COWAN
DOUG BIDWELL
JEFFREY W. BLANCHARD
JOSHUA S. BOGER, PHD & AMY SCHAFER BOGER, MD
DEBRA K. BORKOVITZ
ROBERT D. BOUDROW
EVA N. BOYCE
GARY B. BRENNER
LANCE BRISBOIS & ADAM LEVEILLE
CATHERINE D. BURGESS
STEVEN & HELEN BURNS
FRANK L. BUSCONI & EDWARD FLEMING
JOHN & ANNETTE CAMPBELL
MARYANN CHAISSON & JANET LAWN
DAVID P. CHICOINE
ANDERSON CLARK, PHD
MATTHEW A. CLARK & JONATHAN L. WORTH, MD
MARY & DEXTER CLEMONS
KRISTINE M. CLERKIN & CATHERINE A. HAY, PHD
ALLISON COLEMAN
STEVEN COMINGDEER
JOHN M. COSTELLO
CARLOS M. COVARRUBIAS
GUY R. CROTEAU
CHARLES & BARRIE DANIELS
VICTOR J. DAVIDSON
NICHOLAS W. DENNIS
ROBERT T. DERRY & KENDALL P. WATTS
ROBERT DITTER & ALPHONSE E. LITZ
LISA J. DRAPKIN & DEBORAH J. LEWIS
JEFFREY DURKEE
GEORGE EDMONDS
KYLE Y. FAGET
KATE FARB-JOHNSON
MARIA J. FASULO
MATT FECZKO
RODERICK A. FERGUSON
OMAR E. FERNANDEZ
DAN FERRELL & DAVID ROGERS
BRUCE W. FINCH & KEITH REIMANN
JOHN FITZPATRICK
DAVID FLEMMONS
INEZ D. FOLSOM
VICTORIA FOWLER & ILEEN CARREL

MICHAEL FRADLEY, MD
PAUL M. FRASCELLA
SALLY FRIAR, DC
STACEY A. FURTADO
LISA S. FUSARO, MD & MAURA SHAUGHNESSY, MD
THOMAS L. GERATY & STUART T. WALKER
SUSAN M. GETMAN
ARTHUR L. GILMAN
JOYCE & JOHN GLYNN
LISA M. GONSALVES & DIANE E. PULLEN
CAROL & DONALD GOUGH
JEANNE H. GRIEVE & YOLANDA RAMIREZ
HANNAH & JACK GROVE
STEPHEN M. HARNEY
ROSS HARPESTAD
LAWRENCE HARTMANN, MD & BRIAN R. PFEIFFER
DANIEL HELLER
HOWARD T. HELLER, MD
JAMIE D. HOAG
REID HOGAN-YARBRO
DENNIS HONG
JOHN D. HOSE
DAVID M. HOUGH
MAURICE P. JOFFE
CHRISTOPHER JOHNSON
IAN W. JOHNSON
JENNIFER L. JONES
NEAL KASS, MD
RUDOLPH & HELEN KASS
JOHN P. KEFFERSTAN
JUNE KELLY
JAMES KILLIAN
KRAIG V. KISSINGER & MARK S. BROWN
ANDREW W. KOPPEL
ANDREW & VIRGINIA KOSKI
MARY K. KRIENER
MARK H. LIBENSON, MD & LISA M. MUTO, PHD
STEVEN M. LILLY-WEBER
JONATHAN S. LITT, MD
RICHARD LOVAGLIO & LINDA A. O'CONNOR
RICHARD LU
MALACHY C. LYNCH
MATTHIAS D. MAGUIRE
DENNIS MARFURT & ELLEN M. FORD
MARY & ALAN MARSHALL
THOMAS J. MARTORELLI
MAUREEN MCCARTHY
SEAN M. MCCONNELL
SARAH KYLEY MCCORMACK
KEVIN F. MCELROY
M. LISA MCHAM, MD & CATHERINE W. JOHNSON
PATRICK J. MCNAMARA
ANNE MEADE
JEFF B. MEANEY
MATTHEW MEISEL
MATTHEW MENDOLERA-SCHAMAN
H. R. ROGER MENEAR, III
JAIME MESSINA

RICHARD MESSINA
RICHARD S. MILSTEIN & JORDAN S. RUBOY, MD
DAVID & SUSAN MIRSKY
ANGEL MORAN
CHRISTOPHER MOTTA
CHRISTOPHER A. NAIDUS
PAUL F. NEUMANN
JOHN OTIS
JEREMIAH PETERSON
JANE PETRO, MD & CAROLYN B. BECKER, MD
CHRISTOPHER PRIMIANO
MATTHEW D. PROCH-WILSON
MITCHELL & ADRIENNE RABKIN
DANTE RAMOS & RYAN SMITH
JEFFREY T. RANAHAN
PATRICIA RANEY, MD
ANGELA RAPPOLI
STEPHEN T. ROMANO
JON Z. ROSBROOK
WILLIAM B. RUBENSTEIN
MARY C. SAVINI
FRANK E. SCHIANO, DMD
BEVERLY SCHWARTZ
SAMANTHA B. SCHWARTZ
BERNARD P. SCOTT
CAROL A. SESTITO
DAVID M. SLATCHER & KEN REYES
BRANDON O. SMITH & JOHN T. O'KEEFE
MARK D. SMITH
JOSEPH SPYCHALSKI & CHAIWUT CHITTKUSOL
MARY & ROBERT STANDISH
PETER J. SULLIVAN
JOSEPHINE TESTA
BENJAMIN W. TOBIN
GUSTAVO TORREZ
DAVID VILLANOVA
PAULETTE & RICHARD VINTON
J. SCOTT WALKER
BRUNNHILDE G. WEIGAND
BRUCE S. WEISBERG & SERGE A. GENESSE
STEVEN J. WOLF
JARED WORFUL
ELIOT T. WRIGHT & RAPHAEL H. JAIMES-BRANGER
ADAM A. WRIGHT & JOSEPH J. NOONAN
DAVID WYPIJ & TIMOTHY BAUM
JOBLIN C. YOUNGER, ESQ.
JOSEPH D. ZIBRAK, MD

THESE LISTS REFLECT DONORS, VOLUNTEERS AND
SUPPORTERS FROM JULY 1, 2012 - JUNE 30, 2013

A photograph of a group of people, mostly men and women in business attire, seated in rows in a modern, well-lit interior space. The image is overlaid with a strong red tint. The text is centered over the image.

BECAUSE WE BELIEVE
THAT ALL GIFTS MAKE
A DIFFERENCE, YOUR
CONTRIBUTION -
REGARDLESS OF THE
AMOUNT - WILL COUNT
TOWARD YOUR MEMBERSHIP
IN THE HAVILAND SOCIETY.



LEGACY SOCIETY

Gift planning brings philanthropic wishes together with sound financial planning. By making a bequest to Fenway Health through a will or trust, naming Fenway as a beneficiary of a life insurance policy or retirement plan, or creating a life income plan to support Fenway, these donors are creating a lasting legacy that benefits the people they most care for, and those who depend on Fenway.

ANONYMOUS (5)

RAYMOND L. BARNES
STEPHEN L. BOSWELL, MD & JOHN A. NEALE
JOSEPH R. CAPUTO
MICHAEL A. CASTELLANA & ROBERT ROTHERY
STEWART B. CLIFFORD, JR.
JOHN M. DECICCIO
NANNETTE L. DUMAS
STEPHEN M. EARHEART
JOHN R. EHRENFELD
PHILIP FINCH
STEVEN F. FOSSELLA & DANIEL S. BOLTON
ADAM GRAVES
ALAN J. GREENFIELD, MD & G.P. PAUL KOWAL
ROBERT H. HALE
DEAN T. HARA
PAUL HEMPEL
JOANNE A. HERMAN

CHARLIE HINDMARSH
KEN HIRSCHKIND
HOWARD HOFFMAN
TERENCE M. KEANE, PHD & DOUGLAS H. HUGHES, MD
KEITH D. KOHL
DAVID LAMPARIELLO, OD
KEN A. LEVINE
RHONDA LINDE, PHD
EDMOND R. MACRI
PATRICK J. MCNAMARA
LOUIS M. MEUCCI
ROBERT A. MITCHELL & THOMAS J. MCNICHOL, JR.
KENDRA E. MOORE
JOSEPH J. NICHOLSON
ALEX J. ONETO
LIZ PAGE
STEPHEN P. PENTEK
JAMES P. PHILLIPS

LT. COL. MICHAEL E. PROFENNO
BRIAN RAMOS
RUTH & ROBERT REMIS
LOUIS RISOLI
LEO ROMERO & IORY ALLISON
ALLISON SALKE
ARNOLD E. SAPENTER & JOSEPH C. REED, PHD
JAMES R. SELIGMAN, DMD
DOUGLAS SPENCER
SCOTT E. SQUILLACE, ESQ. & SHAWN M. HARTMAN
CHARLES E. STEINMAN & JOHN C. MARKSBURY
CALEB PAUL STEWART
BRADFORD W. VOIGT & WILLIAM G. BURTON
EDWARD L. WIERMAN
DAVID R. YALEN
JOBBLIN C. YOUNGER, ESQ.

THESE LISTS REFLECT DONORS, VOLUNTEERS AND SUPPORTERS FROM JULY 1, 2012 - JUNE 30, 2013

FRIENDS OF FENWAY

The 2012–2013 Friends of Fenway is a special group of dedicated supporters who contributed to the Annual Fund at levels up to \$1,339 from July 1, 2012 through June 30, 2013.

\$750 – \$1,339

ANONYMOUS (2)

AMANDA ANNIS

BEVERLY BATES & CHERIE LAPPINI

JAMES P. BENNETTE, JR. & DAVID M. COWAN

ELIZABETH M. BLAICHER

JOANNE CANCRO, DC & CHARLENE P. ALLEN

ROGER M. CARTER

ROBERT CUMMINGS & DENNIS E. CONDON

NATASHA ENGAN & IRWIN SCHWARTZ

DAN FERRELL & DAVID ROGERS

DOUGLAS P. FIEBELKORN

ABIGAIL GALLANT

CAROL GLAGOLA

HANNAH & JACK GROVE

LESLIE HAND

EUGENIA HANDLER & JOEL T. WATSON

MAURICE P. JOFFE

ROBERT KINSEY

DEBORAH MAINE, DRPH

SARA MALCONIAN & KATHERINE TRUSCOTT

URSULA MATULONIS, MD & JANE K. O'ROURKE

JOHN MCGOWAN

DAVID & TAMMY D. MURPHY

RUSS I. PORTER

CHRISTOPHER PRIMIANO

ANGELA RAPPOLI

JOHN J. SANFORD

WENDY A. SIMMONS & PATRICIA PLOURDE

DAVID M. SLATCHER & KEN REYES

GREGORY SMITH

STONE SOUP FUND

MELISSA TOMEY-STREETO

HENRY K. VANDERMARK

LOUISE A. VENDEN & SALLY DEANE

SHERRY R. WINTERITZ, MD & JEAN ANN FRAZIER, MD

\$500 – \$749

ANONYMOUS (3)

JEAN BARTHOLEMEW & BETH MONAHAN

ALLISON F. BAUER & MARIE A. LONGO

MARY BELGE

ELLEN BERMAN

GENELLE BISHOP & DEBORAH KERR

SKYLER BRADER

MARK BRAUN

CAROL J. BRESLER & CAROLYN A. BILLINGHURST

CYNTHIA N. BROOKS

RANDY BROOMHALL-DILLARD, PHD

RENEE BRUNELLE

CATHERINE D. BURGESS

LYDIA CAPANO

MARYANN CHAISSON & JANET LAWN

PHYLLIS B. COHEN

MARIANNE COLACRAY & TAMMY M. MAY

ANDRINE CONSTANT, MD

DAVID R. CORMIER

JAMES & JANE COTTRELL

ANNE COWIE

WILLIAM DAVISON

GENE DUGGAN AND KATIE RADDATZ

JUDITH A. ERDMAN & ELLEN W. GRIGGS

NIMA ESHGHI & KATE S. ESHGHI

MELISSA FERRICK

ALICE FISHER

KRISTEN FITZGERALD

JAMES F. FLANAGAN & JOHN J. MEUNIER

NIAMH C. FOLEY

CHRISTINE E. FOLEY & JENNIFER S. PALMER

MARY J. FORD

KIRSTEN FRENI

BRIAN GAGNE

ROBERT P. GALLAGHER

THOMAS J. GENEREUX & DAVID J. ADAMS

JOANNE GERBER

SUSAN M. GETMAN

EAMONN G. GILL

JOHN & JANICE GRIFFIN

BARBARA & STEVEN GROSSMAN
JENNIFER GRYGIEL
AYAD R. HAMDAN & JOSEPH R. PENDARVIS
MITCHELL HAMILTON
PATRICIA A. HAMILTON
CYNTHIA HARMON
JENNIFER HARRIS
MIKKIE HARVEY
KATE HECHT
SARAH HENKEN
KERRY B. HERMAN
GLENDOWLYN F. HOWARD, PMP
JENNIFER KARNAKIS
MICHAEL D. KEARNEY
CAROL S. LAMB & NITA M. LAMBORGHINI, PHD
JULIA & MEGAN LANHAM
PEGGY LARSEN
DEBRA L. LARSON
STUART & SALLY LESSER
JOYCE E. LIBBY
BENJAMIN LIGHTFOOT, MD
JANIS J. LIPPMAN & ELLEN R. GRUBERT
SUSAN M. LOVE, MD & HELEN COOKSEY, MD
BETH LUCKENBACH
LUCY G. MACK

DENISE MARIKA
REBECCA & CARLA MARSHALL-WAGGETT
CARLYLE MASSEY
JASON MCCOY
ELAINE MCGRATH
JODI MEEHAN & REGINA SAVAGEAU
ROBBIE J. MEITLER
SUZANNE R. MICHAUD
JANET MILLEY
MARGARET MITCHELL
ROBERT F. MONACO
DANIEL A. MULLIN
JANICE C. MURPHY & JAYNE C. SHEEHAN
THERESA C. MURRAY
MICHELLE R. NOCERA
GREGORY F. NOONAN
GRICEL M. OCASIO
EVE O'ROURKE
JULIE O'SHAUGHNESSY
TAICE & CHRIS PERROTTI
GARY & MARY PFORZHEIMER
DREW PICCIAFOCO
AMY A. PITTER & LEAH C. CAMHI
TINA M. PITTORE
ANDREA K. POTTER & AIMEE VAN WAGENEN

JANE POWERS & PEGGY HAYES
LAURIE PULIDO
JEFFREY T. RANAHAN
ABIGAIL D. REBELLO
MICHAEL L. RENEEY & ALEXANDER CRUZ
JOSEPH F. RILEY
CAROL A. ROBY & MICHELE RUBIN
LUIS ROJAS
EVA L. SHEVELOFF
SARAH J. SHOEMAKER
ALTHEA SMITH
DEIRDRE A. SMITH
ARTHUR E. STROUT, ESQ. & CAROL STROUT
MARSHA E. THAYER
ALICE A. TILLMAN
DIANE M. TUCKER
DORIS TWEEDY
CHRISTOPHER A. VIVEIROS
KENDALL P. WATTS & ROBERT T. DERRY
TERRENCE WEST
HILLARY WINANS
JONATHAN L. WORTH, MD & MATTHEW A. CLARK
ELIZABETH WU

\$250 – \$499

ANONYMOUS (5)
ADAM S. ALBANO
SAMUEL M. ALLEN
MIKKI ANSIN
TODD ARDITO
STEVEN BACKHAUS
SHARYN BAHN
BARUSCH AND GREG PRICE
SHERYL BATTIT & KARYN B. ADAMS
DAVID BAUM
PETER P. BELOBABA
DEBORAH BERGERON & NANCY LEE
MITCHELL BILCZEWSKI
JEFFREY BLACKWELL
TIMOTHY BLANK
AYANA BLUE
NANCY A. BORSTELMANN & ERIC P. WINER
STEVEN BOWE
KYLE D. BOWMAN
EVA N. BOYCE
ERIN BRADLEY
RICHARD P. BRANSON & EDWARD P. KEEFE
KATE BRONSTAD
ROBERT C. BUCHANAN
KURT BUFFINGTON
MICAH J. BUIS
ANDREW BUNYARD
WILLIAM J. CALLAHAN, MD
SEAN CAMP
SEAN J. CAPLICE
ROBERT CAPLIS
ALEXANDER G. CARLOCK

LUCAS CHEN
ANASTOS F. CHIAVARAS
ANDREW J. COLLERAN, JR.
ROBERT CONIGLIO
PATRICIA A. CONNOLLY, MD
ROB CONSALVO
CARLOS M. COVARRUBIAS
MARNIE CRAWFORD SAMUELSON
JOSEPH R. CURL
SHEILA M. CUSOLITO
VICTOR J. DAVIDSON
PHILIP N. DEARBORN
KEVIN DERRICK
EARL E. DIMACULANGAN
MEGAN E. DOBSTAFF
JOAN DONAHUE
JULIAN A. DORMITZER
LIZ DOUGLASS
STEVEN DRURY
CHRISTIAN DUMAIS
PATRICK DYKES
GEORGE EDMONDS
LEE W. ELLENBERG
LEIF W. ELLISEN, MD, PHD
DAVID W. EPPLEY
TIMOTHY J. FAMULARE
JOHN FAVAZZO
RODERICK A. FERGUSON
JARED FIJALKOWSKI
BRYAN J. FINOCCHIO & SALVATORE A. FORTE
JOHN FITZPATRICK
MALCOLM J. FLYNN

ELLEN M. FORD & DENNIS MARFURT
MONTE W. FOSTER
SALLY FRIAR, DC
JEREMY M. FRIE
RICHARD D. GARDNER, ESQ.
DAVID A. GEORGANTAS
ERIKA GIOVANNIELLO
LISA M. GONSALVES & DIANE E. PULLEN
CAROL & DONALD GOUGH
PATRICK C. GUERRIERO
PATRICK HALE
JULIE HAMILTON
SARA L. HAMMOND
TRICIA HASKINS
FREDERICK J. HEINRICHS & DAVID HECKERT
DANIEL HELLER
REID HOGAN-YARBRO
JOHN D. HOSE
DAVID M. HOUGH
ANTHONY HUBBARD
JOHNNY W. HURDLE, III
MAXINE JACKSON
EMMA JEFFRIES
JAMES C. KADDARAS, JR.
DANIEL KAMYCK
SCOTT KEARNAN
JASON KEAVENY
JOHN G. KELLER
TYLER D. KINNEY
MELVIN KLAYMAN
KRISTINA KNOWLES
BRIAN S. KOLL, MD



ANDREW S. LANTZ

THOMAS J. LAROSA

KATHERINE LAVELLE & CATHERINE CAPPELLI

DANIEL LISS & CARL-CHRISTIAN R. SIEBEN

ALICIA LOCHARD

DANIEL & DEBORAH LOLIK

RICHARD LU

ASHLEY LUCAS

MALACHY C. LYNCH

ZHIYUAN MA

LISA MANERA, MD

STEPHEN MARTYAK

COURTNEY MATTINGLY

LYNNE MAYNARD

CARA MCKENNA

MICHAEL A. MCKENNA, PHD & DAVID SMALL

RALPH MELE

MATTHEW MENDOLERA-SCHAMAN

JAIME MESSINA

ROBERT B. MINTURN

ANGEL MORAN

LUKE T. MURPHY

BIANCA C. MURPHY & SUSAN G. BUERKEL

ROBERT Y. MURRAY

RYAN J. NISTLER

LINDSEY L. NOECKER

JOEL M. NOLAN

MICHAEL OLIVERI & ADAM BEDDIE

KENNETH OLSEN

AMANDA D. O'NEIL

JOAN PARKER

THE PARRITZ FOUNDATION/PROMOSTUFFONLINE.COM

GEORGE W. PASSELA

THOMAS D. PENQUE

MICHAEL POLIQUIN

OLIVER POMEROY, MD

REBECCA PRICE & CARA MCKENNA

BRIAN RAMOS

MADDALENA RANIERI

SARI REISNER

JONATHAN REVEIL

GENA RICCIARDI

DEEJAY ROBINSON, JR.

JON Z. ROSBROOK

KAREN S. ROTENBERG & MICHAEL ROTENBERG

PETER SADOW, MD

LISA SAVINI

CAROLE SCHLESSINGER

SARA G. SCHNORR

SAMANTHA B. SCHWARTZ

GLENN A. SEBERG

EVA L. SHEVELOFF

MARTYNA SKOWRON

JAN SLEZAK, MD

ALLISON W. SMITH

BRANDON O. SMITH

JEROME M. SMITH

MARK D. SMITH & JOHN T. O'KEEFE

REBECCA SNIDERMAN

BRIDGET E. SOUZA

ANDREW SPINDLER

GREGORY T. BOWNE & MARK STALOFF

DANIEL J. SWEENEY

STEPHANIE A. SYLVIA

RIK & DAMARIS TAMM-DANIELS

JOHN B. TAYLOR & CHRISTOPHER MADSON

PETER L. TENGGREN & WARREN MITCHELL

LAUREN THIE & KEISHA MYRICK

THOMAS THORNE-THOMSEN

BENJAMIN W. TOBIN

GUSTAVO TORREZ

ROBERT B. TRICOMI

NICK VANALSTINE

PAUL VANDEMAR

CARLOS A. VARGAS

ANDREW VEGA

KEVIN J. VIGNERON

DAVID VILLANOVA

PAULETTE & RICHARD VINTON

CAROLYN WALDEN

BRUCE D. WALKER & ALICE M. CORT

CHRISTOPHER WALTROUS

KELLY WARD

SUSAN B. WEDDA & MICHELLE REDIKER

WESLEY J. WERBECK

LINDA WERNER

GLENN WHITE

MARCIA E. WHITEHEAD

CLAIRE B. WILLIS

MICHAEL WOOD & JOHN F. MORAN

RUFUS WOODARD

PAULA R. ZAENTZ

TRIBUTE AND MEMORIAL GIFTS

Tribute and memorial gifts provide a unique way for people to acknowledge loved ones and others who had an impact on their lives. Whether honoring individuals who believe strongly in our mission, or memorializing those who have passed away, these gifts help Fenway promote access to quality care for all those who need it. Celebrated through gifts in their honor or memory, the exceptional people listed here have made a lasting impact on the lives they have touched.

GIFTS WERE MADE IN HONOR OF

DR. MICHAEL CAPLAN
JOSEPH R. CAPUTO
JOSEPH CASTELLANA, PHD & JAMES R. SELIGMAN, DMD
DORIE CLARK
DAVID'S FAITH TEAM
NANNETTE DUMAS
JERRY FEUER
ED & MADELEINE GROMADA
ROBERT HOLMES HALE
PATRICIA A. HAMILTON
PADMINI HARIGOPAL, MD
DANIEL S. KAMIN, MD
HARVEY MAKADON, MD
ANDREW MCFARLAN
ZARA & JANICE MURADALI
DONALD NELSON
JIM ORSHAW
LIZ PAGE
REBECCA SCHIFF
RICHARD TARANTO
RODNEY VANDERWARKER

GIFTS WERE MADE IN MEMORY OF

PETER ANSIN
JILL ANN BOSKEY
JAMES COSTELLO
RHODA GELWARD
DONNIE GOUGH
BRIAN HAVICAN
BARBARA LEVINE
ANDY PRIOR
HENRY SCHNIRMAN

THESE LISTS REFLECT DONORS, VOLUNTEERS AND
SUPPORTERS FROM JULY 1, 2012 - JUNE 30, 2013



SPECIAL FUNDRAISING EVENTS

Special fundraising events provide additional ways for those who want to make a difference and support Fenway Health. Thank you to all of those who have contributed further funding to Fenway's mission.

BOSTON SPIRIT MAGAZINE BOAT CRUISE

DAVID COTTRELL'S FAITH TEAM

HARBOR TO THE BAY, INC.

CHARLIE HINDMARSH

TEMPLE SHALOM

THE WELCOMING COMMITTEE



105 RIDERS



55 CREW MEMBERS



\$225,000 RAISED

HARBOR TO THE BAY

2013

Harbor to the Bay is a charity bike ride from Boston to Provincetown that donates 100% of its proceeds to support HIV/AIDS programs and services at four area agencies, including Fenway Health.

The Harbor to the Bay Ride is made possible each year because a core group of dedicated individuals, under the leadership of Harbor to the Bay President and director Jim Morgrage, volunteer their time and sweat to make it happen. So far, Harbor to the Bay has raised more than \$3 million and distributed every penny to its beneficiaries. Few volunteer-driven fundraising events can point to such a successful track record.

This year was the 11th ride and 105 riders and 55 crew members dedicated their efforts to Fenway Health, ensuring that all of the money they raised will help Fenway provide care and services to every HIV-positive person who comes through our doors, regardless of their ability to pay. Altogether, the 2013 Harbor to the Bay Ride raised more than \$225,000 for Fenway Health, our largest Ride fundraising total so far.

FENWAY HEALTH RIDERS

STACEY E. ADAMSON
SHYNE ALIVE
MICHAEL AMARAL
AMANDA ANNIS
NANCY ANTIN
JENN BATORE
CHRISTOPHER BELCHER
MITCHELL BILCZEWSKI
RICHARD BLANK
JACK BRENT
KATE BRONSTAD
KELSEY BROOKS
VINCENT CARR
CEZANNE CARTIER
AARON CHANDLER
ROBERT CONIGLIO
JEFFREY A. CONRAD
MICHAEL CRACKOWER
WILL CRIBBY
DAVID DALRYMPLE
MEGAN E. DOBSTAFF
ERINA DONNELLY
DENNIS P. DUFFY
NANNETTE L. DUMAS
FREDERICK DURSO
JUAN ESCOBAR
MANUEL FERNANDEZ
JARED FIJALKOWSKI
PHILIP FINCH
ERIK FINLAY
TIMOTHY J. FITZGERALD
NATHANIEL GILL
PETER T. GORMAN
CHARLIE GREGOR
EMILY HART-GORMAN
TIMOTHY B. HARWOOD
MICHAEL HEALY
ALBERTO HERNANDEZ

COMPANIES & FOUNDATIONS

The following companies and foundations generously support Fenway Health's mission. Whether through their event sponsorship, targeted support of specific programs or services, or general support, Fenway is grateful to have them as partners in support of the care we provide.

\$250,000+

EDWARD PAYSON GEORGE CHARITABLE TRUST

\$50,000 - \$249,999

GOLDSMITH FOUNDATION

HARBOR TO THE BAY, INC.

\$25,000 - \$49,999

BETH ISRAEL DEACONESS MEDICAL CENTER

BROADWAY CARES/EQUITY FIGHTS AIDS

CUMMINGS FOUNDATION

THE SILVA WATSON MOONWALK FUND

TUFTS HEALTHPLAN FOUNDATION

\$10,000 - \$24,999

BARBARA A. LEVINE CHARITABLE GIFT FUND

THE BENNETT FAMILY FOUNDATION

THE BOSTON FOUNDATION

EASTERN BANK

EDWARDS WILDMAN PALMER LLP

ESMOND V. HARMSWORTH CHARITABLE FOUNDATION

FIDELITY INVESTMENTS

MINTZ, LEVIN, COHN, FERRIS, GLOVSKY AND POPEO, P.C.

NORTHERN TRUST COMPANY

STATE STREET

THOMSON REUTERS

\$5,000 - \$9,999

AT&T

BNY MELLON

BOSTON MARRIOTT COPLEY PLACE

CITIZENS BANK

DELOITTE & TOUCHE USA LLP

ENTERTAINMENT AIDS ALLIANCE

ERNST & YOUNG LLP

GIVE WITH LIBERTY*

THE LASSOR & FANNY AGOOS CHARITY FUND, INC.

MORGAN STANLEY SMITH BARNEY

NEIGHBORHOOD HEALTH PLAN

PRICEWATERHOUSECOOPERS LLP

QUEST DIAGNOSTICS

REPRODUCTIVE SCIENCE CENTER OF NEW ENGLAND

SUFFOLK CONSTRUCTION CO., INC.

WELLS FARGO ADVISORS LLC

\$2,500 - \$4,999

ALEXANDER, ARONSON, FINNING & CO, PC

AMERIPRISE FINANCIAL*

AVIV CENTERS FOR LIVING

THE BOSTON FOUNDATION

CITYSIDE SUBARU

COVIDIEN*

DOWLING & O'NEIL INSURANCE AGENCY

EATON VANCE INVESTMENT MANAGEMENT

HARBOR HOTEL PROVINCETOWN

HARVARD PILGRIM HEALTH CARE FOUNDATION

KPMG

MERCK RESEARCH LABS

SAMUELS & ASSOCIATES INC.

THE SUSAN A. AND DONALD P. BABSON CHARITABLE FOUNDATION

W. B. MASON



\$1,000 - \$2,499

ACTION FOR BOSTON COMMUNITY DEVELOPMENT, INC.*
BANK OF AMERICA*
BENNO & ELAYNE HURWITZ FAMILY FOUNDATION, INC.
GARDNER RESOURCES CONSULTING LLC
GRANTHAM, MAYO, VAN OTTERLOO & CO. LLC
IBM*
MASSACHUSETTS INSTITUTE FOR PSYCHOANALYSIS, INC.
MFS INVESTMENT MANAGEMENT*

MILLENNIUM PHARMACEUTICALS*
THE PLYMOUTH ROCK FOUNDATION*
SEYFARTH SHAW LLP
VERIZON*
THE VMWARE FOUNDATION*

\$500 - \$999

BRECKINRIDGE CAPITAL ADVISORS, INC.
HARVARD COMMUNITY GIFTS
MACY'S FOUNDATION*
MOVING VIOLATIONS MOTORCYCLE CLUB

NORTHROP GRUMMAN*
OLD SOUTH CHURCH IN BOSTON
PRISM ENERGY SERVICES

\$250 - \$499

THE BAUPOST GROUP LLC*
PFIZER FOUNDATION*
REIT MANAGEMENT & RESEARCH LLC*
THE PARRITZ FOUNDATION / PROMOSTUFFONLINE.COM

* MATCHING GIFTS

THESE LISTS REFLECT DONORS, VOLUNTEERS AND
SUPPORTERS FROM JULY 1, 2012 - JUNE 30, 2013

IN-KIND SUPPORT

THESE LISTS REFLECT DONORS, VOLUNTEERS AND
SUPPORTERS FROM JULY 1, 2012 - JUNE 30, 2013

Fenway Health is grateful to the following individuals and companies who came forward with in-kind support, and have helped to advance Fenway's mission.

28 DEGREES	BOSTON RED SOX	ROBERT DIMMICK
5 STAR TRAVEL	BOSTON SPORTS CLUBS	DJ JODI ENTERTAINMENT
A & A LASER, ELECTROLYSIS AND SKIN CARE	BOSTON WOMEN'S RUGBY FOOTBALL CLUB	THE DOGWOOD
A X ARMANI EXCHANGE	MAX BRENNER	DUFFY DESIGN GROUP
ABOVE AND BEYOND CATERING	JOHN BREWER	STUART DUNKEL
ACCENT LIMOUSINE SERVICE	BRILLIANT PAINT CO.	ANN M. DUQUETTE, MS, LMT
TOM ACEVEDO, LYMAN EYER GALLERY MIAMI/ PROVINCETOWN	BRIX WINE SHOP	EASTERN STANDARD KITCHEN & DRINKS
AMERICAN REPERTORY THEATER	BROADWAY IN BOSTON	THE ELEPHANT WALK RESTAURANT GROUP, INC.
CARIAPPA ANNAIAH, CANVAS FINE ARTS	MITCHELL BROWN	ENTERTAINMENT CRUISES BOSTON
ANONYMOUS	REBECCA BRUYN, OUTER CAPE PRINTS	ERBALUCE; CHARLES & JOAN
ANTICO FORNO	HEATHER BUECHLER	ERDMAN DESIGNS
ARAMARK @ FENWAY PARK	BUKOWSKI TAVERN	FEDERICO EREBIA
ARTU ROSTICCERIA & TRATTORIA	BURKE DISTRIBUTING CORPORATION	THE ESTATE OF SAM ABATE
ASHMONT GRILL	CALIFORNIA CRYOBANK, INC.	EVELYN MCFARLANE
AVFX	CAPE AIR	EYE HEALTH SERVICES, INC.
CANAN AVUNDUK	CAPE TIP SPORTSWEAR	TIFFANI FAISON, CHEF/OWNER OF SWEET CHEEKS
BACARDI	SETH CASTEEL, COURTESY OF LANOUE FINE ART	MELISSA FERRICK
BACK BAY FITNESS	CATHERINE HINDS INSTITUTE OF ESTHETICS	FIRE AND ICE
BALANCE SPA	CELEBRITY SERIES OF BOSTON	THE FIREPLACE
BANTAM CIDER COMPANY	CHARLES RIVER CANOE & KAYAK	CAROLYNN FISCHEL
BARBERSHOP DELUXE	CHARLES TERSOLO FINE ART	FLEMING'S
BAYSIDE BETSY'S	THE CHEESECAKE FACTORY	FOODIE'S MARKET
BAYSTATE BENEFIT SERVICES, INC.	CHELSEA LATELY ON E!	FREE CITY
BAYSTATE FINANCIAL	CHURCH RESTAURANT & NIGHTCLUB	FREEDOM TRAIL FOUNDATION
BE SAFE FIREARMS TRAINING	CIAO ANDIAMO, LLC	FRESH HAIR
BEAU TIES LTD. OF VERMONT	CITIZENS BANK	AMY FURMAN
BEDFORD VILLAGE INN	CITY FEED & SUPPLY	G SPA AT MGM GRAND AT FOXWOODS
THE BEEHIVE	MARC CIVITARSE, COURTESY OF LANOUE FINE ART	GALLERY ANTONIA
BELLA LUNA RESTAURANT AND THE MILKY WAY	MARY ELLEN CLARK	GAME ON
BELLEZZA HOME & GARDEN	CLARK FINE ART SERVICES LLC	GASLIGHT
BERTUCCI'S ITALIAN RESTAURANT	CLAY HILL FARM RESTAURANT	ETHAN GASTON
JACK BLACK	CLUB CAFE	GEOFFREY'S
CHELSEA BLACKMER	THE COLONNADE HOTEL	JOANNE GERBER
BLEACHER BAR	COMMUNITY ROWING, INC.	GIANT CYCLING WORLD BOSTON
BLU DAY SPA	CONAN!	THE GIBSON HOUSE MUSEUM AND ETIQUETTEER
BLUE GINGER	CONSTELLATION BRANDS	TRACY GIRDLER, CANVAS FINE ARTS
BLUE HILLS TRAILSIDE MUSEUM	THE CONTAINER STORE	GOOD
BLUE INC.	COOLIDGE CORNER THEATRE FOUNDATION	GOOD VIBRATIONS
BODYWORK REVOLUTION	COPLEY HEALTH ALLIANCE	GRAFTON GROUP
BOING! JP'S TOY SHOP	COPLEY SOCIETY OF ART	THE GRAND RESORT AND SPA
BONOBOS	CORE HEALTH ACUPUNCTURE	JULIE GRAY
JOHN BORCHARD	THE COTTAGE	HALEY HOUSE BAKERY CAFE
BOSTON BALLET	COURTYARD TIMES SQUARE SOUTH BY MARRIOTT	HAMERSLEY'S BISTRO
BOSTON CELTICS	CRAZY DOUGH'S PIZZA	HANDEL AND HAYDN SOCIETY
BOSTON CENTER FOR ADULT EDUCATION	DAVID MARSHALL DATZ, P.C.	HARBOR TO THE BAY
BOSTON DERBY DAMES, LLC	MARK DAVIS	MARY B. HARRINGTON
BOSTON GAY MEN'S CHORUS	DBAR	HARVARD UNIVERSITY ART MUSEUMS
BOSTON HARBOR CRUISES	DECORDOVA SCULPTURE PARK AND MUSEUM	HEALING SOLES
BOSTON HARBOR HOTEL	DEFINITIONS SKINCARE	HEALTHWORKS FITNESS CENTERS
BOSTON MARRIOTT COPLEY PLACE	DEUTSCH FAMILY WINE & SPIRITS	ELLEN HERMANOS, COURTESY OF SUSAN ELEY FINE ART
	DIFFUSE 5	HIGHLAND KITCHEN





PUBLIC AGENCIES

Support from public agencies makes many of our programs and services possible. Public support for Fenway Health's work comes from all levels of government – city, state and federal.

FEDERAL

CENTERS FOR DISEASE CONTROL AND PREVENTION

HEALTH AND HUMAN SERVICES / HEALTH RESOURCES AND SERVICES ADMINISTRATION

- BUREAU OF PRIMARY HEALTH CARE
- HIV AIDS BUREAU

NATIONAL INSTITUTES OF HEALTH

- NATIONAL INSTITUTE OF ALLERGY AND INFECTIOUS DISEASES
- NATIONAL INSTITUTE OF MENTAL HEALTH
- NATIONAL INSTITUTE OF CHILD HEALTH AND HUMAN DEVELOPMENT
- NATIONAL INSTITUTE OF DRUG ABUSE
- NATIONAL INSTITUTE OF MINORITY HEALTH AND HEALTH DISPARITIES
- NATIONAL INSTITUTE OF ALCOHOL ABUSE AND ALCOHOLISM

U.S. DEPARTMENT OF JUSTICE OFFICE OF VIOLENCE AGAINST WOMEN

NATIONAL INSTITUTE OF CORRECTIONS

MASSACHUSETTS

DEPARTMENT OF PUBLIC HEALTH

- BUREAU OF SUBSTANCE ABUSE SERVICES
- DIVISION OF PRIMARY CARE AND HEALTH ACCESS/BUREAU OF COMMUNITY HEALTH ACCESS AND PROMOTION
- BUREAU OF INFECTIOUS DISEASE PREVENTION, RESPONSE AND SERVICES
 - OFFICE OF HIV/AIDS
 - DIVISION OF STD PREVENTION
- SUICIDE PREVENTION PROGRAM

MASSACHUSETTS OFFICE OF VICTIM ASSISTANCE

EXECUTIVE OFFICE OF HEALTH & HUMAN SERVICES

- OFFICE OF MEDICAID
- ESSENTIAL COMMUNITY PROVIDER TRUST FUND
- HEALTH CARE REFORM OUTREACH AND EDUCATION UNIT

EXECUTIVE OFFICE OF ELDER AFFAIRS

UNIVERSITY OF MASSACHUSETTS WORCESTER/OFFICE OF COMMUNITY PROGRAMS/NEW ENGLAND AIDS

EDUCATION AND TRAINING CENTER

CITY OF BOSTON

BOSTON PUBLIC HEALTH COMMISSION

- INFECTIOUS DISEASE BUREAU / HIV AIDS SERVICES DIVISION

OFFICE OF JOBS AND COMMUNITY SERVICES

THESE LISTS REFLECT DONORS, VOLUNTEERS AND SUPPORTERS FROM JULY 1, 2012 - JUNE 30, 2013

VOLUNTEERS

As with donors and staff, Fenway's volunteers work toward a common goal. Committed, reliable and closely linked to our mission, they make a very real difference in whatever way they serve.

CONNECT TO PROTECT/SMILE

ELI COHEN

CHONG-MIN FU

MASSAH MASSAQUOI

JESSICA WATSON

PHYLISA WISDOM

FENWAY HEALTH CONSUMER ADVISORY BOARD

GEORGE CAPER

ROCHELLE JANEY

FENWAY HEALTH DEVELOPMENT COMMITTEE

LIZ PAGE, CFRE

CHARLIE HINDMARSH

STEWART B. CLIFFORD JR.

AN G. HINDS

MICHAEL ISTVANKO

JUNE KELLY

JOHN B. KOSS, ESQ

ALLISON SALKE

DOUGLAS SPENCER

JARED WORFUL

FENWAY HEALTH MEMBERSHIP COMMITTEE

MICHAEL ISTVANKO

ASHLEY LUCAS

ALLISON SALKE

DOUGLAS SPENCER

GAIL TSIMPREA, PHD

RICHARD TARANTO

FENWAY HEALTH FINANCE COMMITTEE

ROBIN A. ATLAS, MD

JOSEPH CASTELLANA, PHD

JOHN M. DECICCIO

ROBERT H. HALE, ESQ

MICHAEL L. RENNEY

ALLISON SALKE

DOUGLAS SPENCER

JOHN R. STEWART

FENWAY HEALTH AUDIT COMMITTEE

ROBIN A. ATLAS, MD

JOSEPH CASTELLANA, PHD

JOHN M. DICICCIO

ROBERT H. HALE, ESQ

JOANNE HERMAN

MICHAEL L. RENNEY

ALLISON SALKE

DOUGLAS SPENCER

JOHN R. STEWART

FENWAY HEALTH BOARD QUALITY & COMPLIANCE COMMITTEE

JOSEPH CASTELLANA, PHD

THOMAS W. CONCANNON, PHD

ROBERT H. HALE, ESQ

JOHN B. KOSS, ESQ

LISA PAINE, CNM, DRPH

BRIAN PRICE, MD

DOUGLAS SPENCER

RICHARD TARANTO

GAIL TSIMPREA, PHD

ALLISON SALKE

THE FENWAY INSTITUTE COMMUNITY ADVISORY BOARD

COCO ALINSUG

MARK CAYABYAB

STEVE CSIPKE

GARY DAFFIN

MAMADOU DIALLO

KIRSTEN FREN

SUNIL GULAB

TED HUFSTADER

FRED MAZYCK

NICK PAULO

RICH TREVINO

THE FENWAY INSTITUTE OUTREACH

REBECCA OBENG

THE FENWAY INSTITUTE INSTITUTIONAL REVIEW BOARD

WILLIAM ANDERSON, PHD

ERNEST BEAN

JOHN FRANK LOVE, MD, PHD

KADEN FUND

DELBERT ANDRÉ GREEN II, MA

BON LAM, MBA

MATTHEW LUCERTO

HOLLY LYNCH, JD

CHRIS MCCOY, PHARM.D, BCPS

MICHAEL MCKENERY

PEG NELSON, BSN, ACRN

TIMOTHY REPPUCCI, JD

HAYDEN SCHWENK, MD

DANIEL SHUMER, MD

BETSY SMITH, PSYD

W. DREW SMITH

ALISSA SPIELBERG, J.D, MPH

LOUISE RICE, RN

REBECCA ZASH, MD, PHD

THE FENWAY INSTITUTE YOUTH COMMUNITY ADVISORY BOARD

ALEXANDER NALLY

ALIAZAR ASEFA

ALLAIN CHERENFANT

ANNA LONGO

BEN HAYES

BRYCE MCKINNEY

CHRIS EM

CHRISTINA GONZALEZ

ELI COHEN

ERICH RIEPEN

JORDAN HOLMES

MIKE MALLOY

NATE VASALLO

NI WALLACE

RONNIE BERG

SAM COHEN

JOSHUA PATNOD

ZULENY GONZALEZ

GIFTON JOSEPH

KARTER BLAKE

RAYSEL MARTINEZ

VALENS ETIENNE

KAAMILA MOHAMED

SIDNEY BORUM, JR. HEALTH CENTER

HOLLY FONTENOT, NP

JOANN SCHULTE, DO

LGBT HELPLINE/PEER LISTENING LINE

ANDREW BAUERBAND

KYLIE CAMERON

EMILY CARLIN

CHRIS CALAHAN

CASEY COVARRUBIAS

DENISE CROOKS

STEPHANIE CZAJKOWSKI

LAURA DELLOSTRITTO

KRISTA DOUGLASS

LIZ DOUGLASS

SUZANNE EDMAN

RACHEL FELDMAN

PATRICK FLANAGAN

EMILY GELFMAN

SLOANE GLOVER

PAIGE GUNNING

HILLARY HEI

ALEX HSIEH

EDMOND HU

CAITLIN KEANE

RYAN KRIVONICK

JACKIE LAUER

JESSE LEUNG

CORINNE LEWIS

QUINCY LIAO

JUAN MARTINEZ

SEAN MCADAMS

KYLE MEYER

COLBY MILLER

PAUL MINNICE

JULIA MOSKOWITZ

SAMMANATHA PECH

MARLIE PHILOSSAINT

SCOTT RAMSDEN

TOM RECKO

BRIAN REIS

COURTNEY SALMON

LIZZY SCHINK

LEANNE SEBREN

SADIE SMITH

ALEX THORNHILL

SHARON ULERY

DAVID VAUGHN

ANDIS VILDAVS

FIAT VONGPUNSAWAD

ALEX WASSERMAN

MEN'S EVENT 2013 VOLUNTEERS

DANIEL A. BATTERMAN

MORGAN BERG

THE BOSTON SISTERS OF PERPETUAL INDULGENCE

RONALD M. BRANKLEY

AMANDA-JANAE BRIGGS

ROBERT BRYANT

DANIEL B. CARRILLO

EMILY CAVANAGH

REGINA ELLERBEE

NATHANIEL R. FRIDMAN

DANIEL GOMEZ

PAUL GONCALVES

ROCKY GRAZIANO

ANI HAKOBYAN

RAUL HERNANDEZ

VICTOR JOHN

BRETT A. JOSEPHSON

TREY LEOTTI

THOMAS J. MAZZAGLIA

KEVIN M. MCCOBB

BONNIE MCFARLANE

WAYNE R. MILLER

LIZ OPPENHEIM

RICHARD PARRITZ

WILLIAM D. SADLER

VAIBHAV SAINI

CARLOS SALAZAR

RICARDO E. SAUCEDO

CHARISSE M. SEBASTIAN

TOM SELIG

DEAN S. SMITH

WOODY SMITH

GREG STORELLA

CARRIE SUNDE

JEFFREY THOMAS

JEAN L. VALLON

PAUL M. VANECKO

MICHAEL WILLIAMS

ROBERT WILLIAMSON

JOHNNY WILLIS

BRYAN YANEZ

ANDREW C. YOUNGS

WOMEN'S DINNER PARTY 2013 VOLUNTEERS

SANDY BAILEY
KALEIGH BILES
THE BOSTON SISTERS OF PERPETUAL INDULGENCE
RONALD M. BRANKLEY
AMANDA-JANAE BRIGGS
SHAYNNE BULGAR
NAZARETH F. CARDOSO
DANIEL B. CARRILLO
TRANIKA CORBETT
GWYNNETH DAVIDOFF
KIMBERLY DOAN
REGINA ELLERBEE
SHINNON FAKHI
LAURA FLANIGAN
AMY GLENN
KATE HABER
LORNECE HAWKINS
RAUL HERNANDEZ

LISA K. KELLEY
ERIN KEMPSTER
PAUL KENNEDY
YOVANNYS KENNEY
KARISHMA KHULLAR
CHANTEL LAVOIE
TREY LEOTTI
SIGMOND LEWIS
JULIA LONGENECKER
TEAGAN L. LUKACS
EMILY MALKIN
LINDA N. MARGOLIS
BETH MCGUIRE
JAMIE METCALFE
ELIZABETH NANIA
CAITLYN O'LEARY
LIRA PARK
AMANDA PRESTON

GIORGIA RENOSTO
MARIBEL REYES
CHARISSE M. SEBASTIAN
ELIZABETH SENECA
MEGHAN SHERLOCK
DEAN S. SMITH
ROBIN SMITH
GREG STORELLA
PRISCILLA TANGE
TY TYLANDER
JEAN L. VALLON
LISA VAN EERDE
PAUL M. VANECKO
MIRANDA WAKIMOTO
JOHNNY WILLIS
ANDREW C. YOUNGS

WOMEN'S HEALTH

EZEKIEL ADIGUN
JOYCE COLLIER
LIZ COOLIDGE
OLLIE CUNNINGHAM
TRICIA DOUGHERTY
AMANDA ESCAMILLA

YVONNE GOMEZ-CARRION
SONDRA HARDY
GLORIA JOHNSON
PAULINE KENNEDY
KARISHMA KHULLAR
RACHEL LEVINE

ELLEN MAHAN
MARILYN MONTEIRO
ERICKA PENA
ASHLEY-ROSE SALOMON
AMANDA VILLANI

YOUNG LEADERS COUNCIL STEERING COMMITTEE

KEVIN DERRICK
MEGAN E. DOBSTAFF
STACEY A. FURTADO
MICHAEL GANNON
ALEX GONZALEZ, MD
DANIEL HELLER
HOWARD HOFFMAN
JOHN D. HOSE

JENNIFER L. JONES
SCOTT KEARNAN
JOHN B. KOSS, ESQ.
JONATHAN S. LITT, MD
ASHLEY LUCAS
JAIME MESSINA
PAUL O. MILLER
ANGEL MORAN

MATT PROCH-WILSON
ANGELA RAPPOLI
ABIGAIL D. REBELLO
JOHN T. REIDY
REBECCA SNIDERMAN
RIK TAMM-DANIELS
JARED WORFUL
JOBBLIN C. YOUNGER, ESQ.



HAVE A POSITIVE IMPACT
ON YOUR COMMUNITY
WHILE MAKING
NEW FRIENDS AND
CONNECTIONS.



INDEPENDENT AUDITOR'S REPORT

REPORT ON THE COMBINING FINANCIAL STATEMENTS

We have audited the accompanying combining financial statements of Fenway Community Health Center, Inc. and Affiliate (Massachusetts corporations, not for profit) (collectively, the Center) which comprise the combining statements of financial position as of June 30, 2013 and 2012, and the related combining statement of activities and changes in net assets, cash flows and functional expenses for the years then ended, and the related notes to the combining financial statements.

MANAGEMENT'S RESPONSIBILITY FOR THE COMBINING FINANCIAL STATEMENTS

Management is responsible for the preparation and fair presentation of these combining financial statements in accordance with accounting principles generally accepted in the United States of America; this includes the design, implementation, and maintenance of internal control relevant to the preparation and fair presentation of combining financial statements that are free from material misstatement, whether due to fraud or error.

AUDITOR'S RESPONSIBILITY

Our responsibility is to express an opinion on these combining financial statements based on our audits. We conducted our audits in accordance with auditing standards generally accepted in the United States of America. Those standards require that we plan and perform the audits to obtain reasonable assurance about whether the combining financial statements are free from material misstatement.

An audit involves performing procedures to obtain audit evidence about the amounts and disclosures in the combining financial statements. The procedures selected depend on the auditor's judgment, including the assessment of the risks of material misstatement in the combining financial statements, whether due to fraud or error. In making those risk assessments, the auditor considers internal control relevant to the entity's preparation and fair presentation of the combining financial statements in order to design audit procedures that are appropriate in the circumstances, but not for the purpose of expressing an opinion on the effectiveness of the entity's internal control. Accordingly, we express no such opinion. An audit also includes evaluating the appropriateness of accounting policies used and the reasonableness of significant accounting estimates made by management, as well as evaluating the overall presentation of the combining financial statements.

We believe the audit evidence we have obtained is sufficient and appropriate to provide a basis for our audit opinion.

OPINION

In our opinion, the combining financial statements referred to above present fairly, in all material respects, the financial position of Fenway Community Health Center, Inc. and Affiliate as of June 30, 2013 and 2012, and the changes in their net assets and their cash flows for the years then ended in accordance with accounting principles generally accepted in the United States of America.

Alexander, Aronson, Finning & Co., P.C.

Boston, Massachusetts - November 5, 2013



STATEMENT OF FINANCIAL POSITION

2013

FENWAY COMMUNITY HEALTH CENTER, INC.

CURRENT ASSETS:

	UNRESTRICTED	TEMPORARILY RESTRICTED	PERMANENTLY RESTRICTED	TOTAL
Cash and cash equivalents	\$9,646,751	\$294,502	\$—	\$9,941,253
Short-term investments	4,926	—	—	4,926
Contract and other receivables	2,202,403	—	—	2,202,403
Patient service receivables, net of allowance for uncollectible accounts of approximately \$1,880,000 and \$3,145,000 as of June 30, 2013 and 2012, respectively	4,167,934	—	—	4,167,934
Current portion of pledges receivable	41,675	250,000	—	291,675
Inventory, net	1,100,717	—	—	1,100,717
Prepaid expenses and deposits	538,010	—	—	538,010
Total current assets	17,702,416	544,502	—	18,246,918

OTHER ASSETS:

Pledges receivable, net of current portion and discount	15,084	497,554	—	512,638
Investments	2,057,301	418,149	302,385	2,777,825
Due (to) from	2,377,472	—	—	2,377,472
Debt service reserve funds	610,704	—	—	610,704
Assets held under split-interest agreement	—	147,440	—	147,440
Financing fees, net	151,888	—	—	151,888
Total other assets	5,212,449	1,063,143	302,385	6,577,977

PROPERTY AND EQUIPMENT:

Land, building and improvements	24,536,583	—	—	24,536,583
Furniture, fixtures, and equipment	6,585,385	—	—	6,585,385
Leasehold improvements	1,175,385	—	—	1,175,385
	32,297,353	—	—	32,297,353
Less—accumulated depreciation	7,157,154	—	—	7,157,154
Net property and equipment	25,140,199	—	—	25,140,199
Total assets	\$48,055,064	\$1,607,645	\$302,385	\$49,965,094

CURRENT LIABILITIES:

Current portion of long-term debt	\$555,000	\$—	\$—	\$555,000
Current portion of capital lease obligations	93,962	—	—	93,962
Accounts payable, subcontractors payable and accrued expenses	4,248,135	—	—	4,248,135
Deferred revenue	1,425,903	—	—	1,425,903
Total current liabilities	6,323,000	—	—	6,323,000

LONG-TERM DEBT, net of current portion

CAPITAL LEASE OBLIGATIONS, net of current portion

INTEREST RATE SWAP CONTRACT IN LOSS POSITION

Total liabilities	6,767,885	—	—	6,767,885
--------------------------	------------------	----------	----------	------------------

NET ASSETS:

Unrestricted:				
Operating	14,100,763	—	—	14,100,763
Property and equipment	27,186,416	—	—	27,186,416
Total unrestricted	41,287,179	—	—	41,287,179
Temporarily restricted	—	1,607,645	—	1,607,645
Permanently restricted	—	—	302,385	302,385
Total net assets	41,287,179	1,607,645	302,385	43,197,209
Total liabilities and net assets	\$48,055,064	\$1,607,645	\$302,385	\$49,965,094

		2012					
FENWAY COMMUNITY REALTY CORPORATION		FENWAY COMMUNITY HEALTH CENTER, INC.				FENWAY COMMUNITY REALTY CORPORATION	
UNRESTRICTED	COMBINING TOTAL	UNRESTRICTED	TEMPORARILY RESTRICTED	PERMANENTLY RESTRICTED	TOTAL	UNRESTRICTED	COMBINING TOTAL
\$55,271	\$9,996,524	\$11,224,086	\$160,415	\$—	\$11,384,501	\$23,198	\$11,407,699
—	4,926	61,337	—	—	61,337	—	61,337
—	2,202,403	2,879,348	—	—	2,879,348	—	2,879,348
—	4,167,934	2,618,081	—	—	2,618,081	—	2,618,081
—	291,675	—	377,912	—	377,912	—	377,912
—	1,100,717	1,037,149	—	—	1,037,149	—	1,037,149
—	538,010	303,918	—	—	303,918	—	303,918
55,271	18,302,189	18,123,919	538,327	—	18,662,246	23,198	18,685,444
—	512,638	—	52,308	—	52,308	—	52,308
—	2,777,835	1,247,616	310,484	302,385	1,860,485	—	1,860,485
(2,377,472)	—	2,375,994	—	—	2,375,994	(2,375,994)	—
1,415,977	2,026,681	701,631	—	—	701,631	1,415,977	2,117,608
—	147,440	—	147,440	—	147,440	—	147,440
—	151,888	165,253	—	—	165,253	—	165,253
(961,495)	5,616,482	4,490,494	510,232	302,385	5,303,111	(960,016)	4,343,094
30,729,667	55,226,250	21,036,784	—	—	21,036,784	30,729,667	51,766,451
—	6,585,385	5,268,569	—	—	5,268,569	—	5,268,569
—	1,175,385	1,159,610	—	—	1,159,610	—	1,159,610
30,729,667	63,027,020	27,464,963	—	—	27,464,963	30,729,667	58,194,630
2,021,323	9,178,477	5,423,961	—	—	5,423,961	1,541,437	6,965,398
28,708,344	53,848,543	22,041,002	—	—	22,041,002	29,188,230	51,229,232
\$27,802,120	\$77,767,214	\$44,655,415	\$1,048,559	\$302,385	\$46,006,359	\$28,251,411	\$74,257,770
\$—	\$555,000	\$525,000	\$—	\$—	\$525,000	\$—	\$525,000
—	93,962	177,927	—	—	177,927	—	177,927
34,243	4,248,135	4,346,821	—	—	4,346,821	—	4,346,821
—	1,425,903	202,876	—	—	202,876	—	202,876
34,243	6,357,243	5,252,624	—	—	5,252,624	—	5,252,624
29,500,000	29,650,000	700,000	—	—	700,000	29,500,000	30,200,000
—	—	90,885	—	—	90,885	—	90,885
—	294,885	502,632	—	—	502,632	—	502,632
29,534,243	36,302,128	6,546,141	—	—	6,546,141	29,500,000	36,046,141
21,028	14,121,791	14,821,838	—	—	14,821,838	23,198	14,845,036
(1,753,151)	25,433,265	23,287,436	—	—	23,287,436	(1,271,787)	22,015,649
(1,732,123)	39,555,056	38,109,274	—	—	38,109,274	(1,248,589)	36,860,685
—	1,607,645	—	1,048,559	—	1,048,559	—	1,048,559
—	302,385	—	—	302,385	302,385	—	302,385
(1,732,123)	41,465,086	38,109,274	1,048,559	302,385	39,460,218	(1,248,589)	38,211,629
\$27,802,120	\$77,767,214	\$44,655,415	\$1,048,559	\$302,385	\$46,006,359	\$28,251,411	\$74,257,770

2013

	FENWAY COMMUNITY HEALTH CENTER, INC.				FENWAY COMMUNITY REALTY CORPORATION	
	UNRESTRICTED	TEMPORARILY RESTRICTED	PERMANENTLY RESTRICTED	TOTAL	UNRESTRICTED	ELIMINATIONS
OPERATING REVENUE AND SUPPORT:						
Net patient service revenue	\$41,149,618	\$—	\$—	\$41,149,618	\$—	\$—
Contracts and grants	12,942,047	1,125,000	—	14,067,047	—	—
Contributions	1,455,110	—	—	1,455,110	—	—
Special events, net of direct costs of approximately \$363,000 and \$341,000 in 2013 and 2012, respectively	600,855	—	—	600,855	—	—
Investment and other income	304,504	—	—	304,504	—	—
Rental Income	—	—	—	—	909,553	(909,553)
Net assets released from purpose restrictions	485,935	(485,935)	—	—	—	—
Total operating revenue and support	56,938,069	639,065	—	57,577,134	909,553	(909,553)
OPERATING EXPENSES:						
Program services:						
Medical services	31,888,305	—	—	31,888,305	—	(436,474)
Research	9,067,581	—	—	9,067,581	—	(172,582)
Behavioral Health	4,202,169	—	—	4,202,169	—	(160,344)
Patient Support	1,942,726	—	—	1,942,726	—	(7,289)
Total program services	47,100,781	—	—	47,100,781	—	(776,689)
Supporting services:						
General and Administrative	5,409,521	—	—	5,409,521	—	(90,365)
Facilities	558,695	—	—	558,695	1,393,087	(27,119)
Public Relations	697,384	—	—	697,384	—	(3,547)
Fundraising	1,119,474	—	—	1,119,474	—	(11,833)
Total supporting services	7,785,074	—	—	7,785,074	1,393,087	(132,864)
Total operating expenses	54,885,855	—	—	54,885,855	1,393,087	(909,553)
Changes in new assets from operations	2,052,214	639,065	—	2,691,279	(483,534)	—
OTHER REVENUE (EXPENSES):						
Capital grants	3,378,645	—	—	3,378,645	—	—
Non-operating investment income	507,820	—	—	507,820	—	—
Net gains (losses) on investments	209,169	107,665	—	316,834	—	—
Unrealized gain on carrying value of interest rate swap contract	207,747	—	—	207,747	—	—
Interest rate swap cancellation fee	—	—	—	—	—	—
Expenditures of Federal capital grant	(3,365,334)	—	—	(3,365,334)	—	—
Net assets released from capital campaign restrictions	187,644	(187,644)	—	—	—	—
Total other revenue (expenses)	1,125,691	(79,979)	—	1,045,712	—	—
Changes in net assets	3,177,905	559,086	—	3,736,991	(483,534)	—
NET ASSETS, beginning of the year	38,109,274	1,048,559	302,385	\$39,460,218	(1,248,589)	—
NET ASSETS, end of the year	\$41,287,179	\$1,607,645	\$302,385	\$43,167,209	\$ (1,732,123)	\$—

2012

FENWAY COMMUNITY
HEALTH CENTER, INC.FENWAY COMMUNITY
REALTY CORPORATION

COMBINING TOTAL	UNRESTRICTED	TEMPORARILY RESTRICTED	PERMANENTLY RESTRICTED	TOTAL	UNRESTRICTED	ELIMINATIONS	COMBINING TOTAL
\$41,149,618	\$35,634,327	\$—	\$—	\$35,634,327	\$—	\$—	\$35,634,327
14,067,047	13,396,098	201,500	—	13,597,598	—	—	13,597,598
1,455,110	1,199,451	—	—	1,199,451	—	—	1,199,451
600,855	511,115	—	—	511,115	—	—	511,115
304,504	1,113,438	—	—	1,113,438	—	—	1,113,438
—	—	—	—	—	792,553	(792,553)	—
—	479,224	(479,224)	—	—	—	—	—
57,577,134	52,333,673	(277,744)	—	52,055,929	792,553	(792,553)	52,055,929
31,451,831	27,645,093	—	—	27,645,093	—	(380,329)	27,264,764
8,894,999	8,222,730	—	—	8,222,730	—	(150,382)	8,072,348
4,041,825	4,033,009	—	—	4,033,009	—	(139,718)	3,893,291
1,935,437	1,786,054	—	—	1,786,054	—	(6,351)	1,779,703
46,324,092	41,686,886	—	—	41,686,886	—	(676,780)	41,010,106
5,319,156	4,847,039	—	—	4,847,039	—	(78,741)	4,768,298
1,924,663	505,565	—	—	505,565	1,279,722	(23,630)	1,761,657
693,837	497,097	—	—	497,097	—	(3,091)	494,006
1,107,641	1,144,476	—	—	1,144,476	—	(10,311)	1,134,165
9,045,297	6,994,117	—	—	6,994,117	1,279,722	(115,773)	8,158,126
55,369,389	48,681,063	—	—	48,681,063	1,279,722	(792,553)	49,168,232
2,207,745	3,652,610	(277,744)	—	3,374,886	(487,169)	—	2,887,697
3,378,645	77,310	—	—	77,310	—	—	77,310
507,820	40,438	—	—	40,438	—	—	40,438
316,834	(70,130)	(11,421)	—	(81,551)	—	—	(81,551)
207,747	16,684	—	—	16,684	—	—	16,684
—	(500,000)	—	—	(500,000)	—	—	(500,000)
(3,365,334)	—	—	—	—	—	—	—
—	382,688	(382,688)	—	—	—	—	—
1,045,712	(53,010)	(394,109)	—	(447,119)	—	—	(447,119)
3,253,457	3,559,600	(671,853)	—	2,927,747	(487,169)	—	2,440,578
38,211,629	34,509,674	1,720,412	302,385	36,532,471	(761,420)	—	35,771,051
\$41,465,086	\$38,109,274	\$1,048,559	\$302,385	\$39,460,218	\$(1,248,589)	\$—	\$38,211,629

FENWAY HEALTH BENEFACTORS

10 STORIES: THE CAMPAIGN FOR FENWAY

The donors here contributed \$10,000 or more to 10 STORIES: The Campaign for Fenway. Their generosity helped to create this facility and to support the programs and services it makes possible.

We are deeply grateful to the more than 6,500 friends of Fenway across New England and elsewhere who have helped to build this facility.

give

built

\$1,000,000 +

Edmund N. Ansin
Ronald M. Ansin
Beth Israel Deaconess
Medical Center
Edward Payson George
Charitable Trust
Kresge Foundation

\$250,000 - \$999,999

Irwin and Roberta Chafetz
Joanne A. Herman
Joseph J. Nicholson
The Silva Watson Moonwalk Fund
U.S. Department of Health and
Human Services

\$100,000 - \$249,000

Anonymous (4)
Catherine Hinds Companies
Stewart B. Clifford, Jr.
Joan and Ted Cutler
John M. DeCiccio
Daniel diBartolomeo
Robert K. Duby
Jean Kowal, MD and
Nina Maslow-Kowal, MD
Betty I. Morningstar and
Jeanette Kruger
Oral Health Foundation, funded by
Delta Dental of Massachusetts
Ruth and Robert Remis
Jonathan Rotenberg
State Street Foundation
Chuck Steinman and
John Marksby

\$50,000 - \$99,999

Anonymous (2)
Jayne M. Alfano
The Boston Foundation
Boston Properties, Inc.
Stephen L. Boswell, MD and
John A. Neale
Cornelia and Stewart Clifford
Edwards Angell Palmer & Dodge LLP
John R. Ehrenfeld and Ruth R. Budd
Alan J. Greenfield, MD and
G.P. Paul Kowal
John Hancock Financial
Terence M. Keane, PhD and
Douglas H. Hughes, MD
Tony Kolish and Vinny Cancelliere
Landmark Center
Barbara A. Levine and
Lori J. Griffiths
Harvey J. Makadon and
Raymond O. Powrie
Randy and Bill O'Brien
Red Sox Foundation
Carol and Paul Rose
Seyfarth Shaw LLP
Kurt A. Slye, MD
Andrew Tobias and Charles Nolan
A. Raymond and Eileen Tye
James R. Tye
Mark Tye



community

\$25,000 - \$49,999

Anonymous (2)
Mr. Richard Bankhead and
Mr. Paul Groppen
David J. Breen and
Michael R. Harrington
Jeffrey A. Conrad
Leb Daccord
David's FAITH Team
Jacqueline and Valerie Fein-Zachary
Merry Fensterman and
Lisa Bevilacqua
John Frishkopf and David King
Marriett Gordon
Robert H. Hale
Paul T. Hempel and
Donald R. Henderson
Gaphaël H. Jaimes-Branger and
Elliot Wright
Peggy L. Johnson, MD and
Koni Ross
Southard Lippincott and David Lilly
Sara Malconian and
Katherine Truscott
Richard Marshall, MD
Kenneth Hugh Mayer
Michael J. Piore and
Rodney L. Yoder
Carl S. Rosendorf
Allison Salke and Kimberly Banovic
Joan and Michael Salke
Scott E. Squillace, Esq. and
Shawn M. Hartman
The Susan A. and Donald P. Babson
Charitable Foundation
Donald Vaughan and Lee Ridgway

\$10,000 - \$24,999

Anonymous (1)
Joanne T. Ayoub and
Rose Anne Joaquin
Judith B. Bradford and
Nannette L. Dumas
James Bryant and Stuart Sadick
James C. Buttrick
David V. Capodilupo
A. Joseph Castellana, PhD and
James R. Seligman, DMD
The Colagrec-Knight Family
Harry Collings and Dan Moon
Marco DeThomasis, Michael Boots
and Friends
Jon Ellims and Richard Taranto
William M. Emmons and
Zach H. Durant-Emmons
Peter J. Epstein, Esq.
Philip Finch and William Halpin
Paul M. Frascella
John Fitzgerald Gates, PhD
Thomas August Gerace
Howard Hoffman
Jesse C. Huang and Kevin J. Fallon
Michael J. Istvanko
Lynn A. Kappelman, Esq.
Kressel Family - Herbert, Shirley,
Mark and David
Paul and Barbara Levy
Gregory Maguire and
Andrew Newman
Robert B. Minturn
Jeffrey H. Munger and
Robert T. Whitman
David W. Murphy and
John W. Simpson
Peter Hamilton Nee
Kevin O'Laughlin, Gregg Snyder
and Family
James Phillips
Glenn A. Rigoff
Andrew F. Saxe
Rebecca L. Schiff
Douglas Spencer
Caleb P. Stewart and Neil M. Perry
John R. Stewart and Michael Ikoma
Joseph F. Szymanski
Rodney VanDerwarker
Michael J. Whalen
Kevin P. Wulff
Joseph D. Zibrak, MD
Stephen H. Zinner, MD

OUR MISSION

The mission of Fenway Health is to enhance the wellbeing of the lesbian, gay, bisexual and transgender community and all people in our neighborhoods and beyond through access to the highest quality health care, education, research and advocacy.

care

MICHAEL
MEMORIA

PHOTO CREDITS

ANUM AWAN
ANTON GRASSL
MARILYN HUMPHRIES
JEREMY WINNICK
CRAIG MONTAGUE

COMMUNITY

FENWAY HEALTH ANSIN BUILDING

1340 Boylston St Boston MA 02215

fenwayhealth.org

thefenwayinstitute.org

FENWAY: SIXTEEN

16 Haviland St Boston MA 02115

sidneyborum.org

FENWAY: SOUTH END

142 Berkeley St Boston MA 02116

[facebook.com/fenwayhealth](https://www.facebook.com/fenwayhealth)

[facebook.com/theborum](https://www.facebook.com/theborum)

THE SIDNEY BORUM, JR. HEALTH CENTER

130 Boylston St Boston MA 02116



FENWAY ED HEALTH